

# Dissipation and $c$ -Entropy in Nevanlinna-Pick Interpolation

S. Belyi\*, K. A. Makarov, and E. Tsekanovskii

**ABSTRACT.** We study interpolation L-systems realizing finite Nevanlinna-Pick data sets and analyze their structural and quantitative characteristics. Explicit formulas are derived for the  $c$ -entropy and dissipation coefficient, two intrinsic invariants that describe the dissipative structure of interpolation L-systems. These quantities depend only on the geometric placement of interpolation nodes in  $\mathbb{C}_+$ , attaining maximal finite values for purely imaginary nodes. The interpolation model  $\Theta_\Delta$  and its unitary equivalents reveal that these invariants form a direct link between analytic interpolation data and the dynamical properties of L-systems. Particular attention is given to symmetric configurations, where the impedance function admits an explicit rational representation and a natural physical interpretation in terms of equivalent  $LC$ -networks.

## CONTENTS

1. Introduction	1
2. Preliminaries	2
3. System Interpolation and L-systems in the Pick Form	5
4. Multiplication Operators and Coupling of L-systems	8
5. $c$ -Entropy and DC of an L-system with multiplication operator	10
6. Interpolation model $\Theta_\Delta$ and its invariants	12
7. Symmetric Interpolation, Physical Interpretation, Examples	18
8. Operator Realization of the Model $\Theta_\Delta$	26
9. Concluding Remarks	32
Appendix A. The Multiplication Theorem	32
References	33

## 1. Introduction

The theory of L-systems provides a functional model framework for dissipative operators and their transfer and impedance characteristics. The formal definition of L-systems and their elements are presented in Section 2. The main theme of this

---

2020 *Mathematics Subject Classification.* Primary 47A10; Secondary 47N50, 81Q10.

*Key words and phrases.* L-system, transfer function, impedance function, Nevanlinna-Pick interpolation;  $c$ -entropy; dissipation coefficient; operator model; unitary equivalence.

\*Corresponding author: Sergey Belyi.

paper is the study L-systems whose impedance functions realize finite Nevanlinna-Pick interpolation data (see [1], [3]). We focus on two intrinsic invariants – the *c-entropy* and the *dissipation coefficient* (introduced and discussed in [6, 4, 5, 7]) – which capture the internal dissipative behavior and depend only on the geometry of the interpolation nodes in  $\mathbb{C}_+$ .

In the framework of the approach suggested in [3] we derive explicit formulas for these invariants and characterize when the c-entropy is finite, maximal, or infinite. As an application, we show that symmetric node configurations admit a physical interpretation in terms of equivalent electrical networks of coupled LC-branches, while degenerate data correspond to purely capacitive elements. This establishes a direct link between analytic properties of interpolation L-systems and their underlying physical and energetic structure.

The paper is organized as follows.

Section 2 recalls basic concepts and definitions concerning L-systems, c-entropy, and the dissipation coefficient in the scalar setting.

Section 3 introduces the interpolation L-system  $\Theta_\Delta$  associated with a finite Nevanlinna-Pick data set and establishes its key analytic properties.

Sections 4 and 5 present the one-dimensional multiplication-operator model and the coupling construction of L-systems, establishing explicit formulas for their transfer and impedance functions.

Section 6 evaluates the c-entropy and dissipation coefficients for these L-systems and identifies conditions under which the entropy is finite, maximal, or infinite.

Section 7 focuses on symmetric interpolation configurations, presenting explicit impedance formulas, connections with rational Herglotz-Nevanlinna functions, and their physical interpretation as equivalent LC-networks.

Finally, Section 8 contains concluding remarks summarizing the main results and their analytical and physical implications.

## 2. Preliminaries

We begin by recalling several basic notions from the theory of L-systems that will be used throughout the paper. Canonical L-systems provide an operator-theoretic framework for modeling linear stationary conservative and dissipative systems in a Hilbert space  $\mathcal{H}$  (see, e.g., [9], [3], [6], [11]).

For a pair of Hilbert spaces  $\mathcal{H}_1, \mathcal{H}_2$  denote by  $[\mathcal{H}_1, \mathcal{H}_2]$  the set of all bounded linear operators from  $\mathcal{H}_1$  to  $\mathcal{H}_2$ .

Let  $T$  be a bounded linear operator in a Hilbert space  $\mathcal{H}$ ,  $K \in [E, \mathcal{H}]$ , and  $J$  be a bounded, self-adjoint, and unitary operator in  $E$ , where  $E$  is another Hilbert space with  $\dim E < \infty$ . Let also

$$(1) \quad \text{Im } T = KJK^*.$$

By definition, the **Livšic canonical system** or simply **canonical L-system** is just the array

$$(2) \quad \Theta = \begin{pmatrix} T & K & J \\ \mathcal{H} & & E \end{pmatrix}.$$

The spaces  $\mathcal{H}$  and  $E$  here are called *state* and *input-output* spaces, and the operators  $T, K, J$  will be referred to as *main*, *channel*, and *directing* operators, respectively.

Notice that relation (1) implies

$$\text{Ran}(\text{Im } T) \subseteq \text{Ran}(K).$$

We associate with an L-system  $\Theta$  two analytic functions, the **transfer function** of the L-system  $\Theta$

$$(3) \quad W_{\Theta}(z) = I - 2iK^*(T - zI)^{-1}KJ, \quad z \in \rho(T),$$

and also the **impedance function** given by the formula

$$(4) \quad V_{\Theta}(z) = K^*(\text{Re } T - zI)^{-1}K, \quad z \in \rho(\text{Re } T).$$

The transfer function  $W_{\Theta}(z)$  of the L-system  $\Theta$  and function  $V_{\Theta}(z)$  of the form (4) are connected by the following relations valid for  $\text{Im } z \neq 0$ ,  $z \in \rho(T)$ ,

$$(5) \quad \begin{aligned} V_{\Theta}(z) &= i[W_{\Theta}(z) + I]^{-1}[W_{\Theta}(z) - I]J, \\ W_{\Theta}(z) &= (I + iV_{\Theta}(z)J)^{-1}(I - iV_{\Theta}(z)J). \end{aligned}$$

The canonical L-system  $\Theta$  in (2) is called *minimal* if the operator  $T$  is *prime* (completely non-self-adjoint) in  $\mathcal{H}$ , i.e., there exists no nontrivial reducing invariant subspace of  $\mathcal{H}$  on which  $T$  induces a self-adjoint operator.

We say that a canonical L-system

$$\Theta_1 = \begin{pmatrix} T_1 & K_1 & J \\ \mathcal{H}_1 & & E \end{pmatrix},$$

is **unitarily equivalent** to an L-system

$$\Theta_2 = \begin{pmatrix} T_2 & K_2 & J \\ \mathcal{H}_2 & & E \end{pmatrix},$$

if there exists an isometric mapping  $U$  of the space  $\mathcal{H}_1$  onto  $\mathcal{H}_2$  such that

$$(6) \quad UT_1 = T_2U, \quad UK_1 = K_2.$$

It was shown in [3] (see also [9]) that if canonical L-systems  $\Theta_1$  and  $\Theta_2$  are unitarily equivalent, then the set  $\rho(T_1)$  of regular points of  $T_1$  coincides with the set  $\rho(T_2)$  of regular points of  $T_2$ , and  $W_{\Theta_1}(z) = W_{\Theta_2}(z)$ , ( $z \in \rho(T_1)$ ). Conversely, if canonical L-systems  $\Theta_1$  and  $\Theta_2$  are *minimal* and  $W_{\Theta_1}(z) = W_{\Theta_2}(z)$  in a neighborhood of infinity, then  $\Theta_1$  and  $\Theta_2$  are unitarily equivalent.

In general (without minimality), the equality of transfer functions determines the system uniquely only up to a self-adjoint direct summand; equivalently, the *principal (minimal) parts* of  $\Theta_1$  and  $\Theta_2$  are unitarily equivalent (see [3], [9]).

In the general theory of L-systems, the state-space operator  $T$  acts in a Hilbert space  $\mathcal{H}$ , the channel space  $E$  is finite-dimensional, and the signature operator  $J$  in  $E$  determines the L-system's input-output structure (see, e.g., [9], [6]). In the present paper, however, we restrict our attention to the simplest nontrivial class of L-systems of the form (2), for which  $E = \mathbb{C}$  and  $J = 1$ , or

$$(7) \quad \Theta = \begin{pmatrix} T & K & 1 \\ \mathcal{H} & & \mathbb{C} \end{pmatrix}.$$

This scalar setting suffices for the interpolation problems considered here and allows all relevant quantities (transfer and impedance functions, c-entropy, and dissipation

coefficient) to be treated as scalar functions while retaining the essential operator-theoretic structure. In particular (5) takes an easier form of scalar Cayley transforms

$$(8) \quad V_{\Theta}(z) = i \frac{W_{\Theta}(z) - 1}{W_{\Theta}(z) + 1}, \quad W_{\Theta}(z) = \frac{1 - iV_{\Theta}(z)}{1 + iV_{\Theta}(z)}.$$

Within this scalar framework, we define the *c-entropy* of an L-system  $\Theta$  of the form (7) by the following relation. This definition was introduced in [7] and further developed in [6], [4], [5], [13].

DEFINITION 1. Let  $\Theta$  be an L-system of the form (7). The quantity

$$(9) \quad \mathcal{S} = -\ln(|W_{\Theta}(-i)|),$$

where  $W_{\Theta}(z)$  is the transfer function of  $\Theta$ , is called the **coupling entropy** (or **c-entropy**) of the L-system  $\Theta$ .

Note that if, in addition, the point  $z = i$  belongs to  $\rho(T)$ , then we also have that

$$\mathcal{S} = \ln(|W_{\Theta}(i)|).$$

Let us also recall the definition of the dissipation coefficient of an L-system.

DEFINITION 2 (cf. [7], [6]). Let  $\Theta$  be an L-system of the form (7) with c-entropy  $\mathcal{S}$ . Then the quantity

$$(10) \quad \mathcal{D} = 1 - e^{-2\mathcal{S}}$$

is called the **coefficient of dissipation** (or dissipation coefficient) of the L-system  $\Theta$ .

Although the dissipation coefficient was introduced above via its relation to the c-entropy, it admits an equivalent representation that expresses  $\mathcal{D}$  directly in terms of the main operator  $T$  and the channel operator  $K$  of the L-system.

LEMMA 1. *Let  $\Theta$  be a scalar L-system of the form (7) with bounded main operator  $T$  and channel operator  $K$  satisfying  $\text{Im } T = KK^*$ . Then the dissipation coefficient  $\mathcal{D}$  of  $\Theta$  admits the representation*

$$(11) \quad \mathcal{D} = 1 - |W_{\Theta}(-i)|^2 = 4K^*(T + iI)^{-1}(T^* - iI)^{-1}K = 4\|(T + iI)^{-1}K\|^2.$$

PROOF. The first part of (11) follows immediately from (9) and (10). Furthermore, recall that the transfer function of  $\Theta$  here is given by (3) or

$$W_{\Theta}(z) = 1 - 2iK^*(T - zI)^{-1}K.$$

A direct computation (see also [3], [9]) yields the identity

$$1 - W_{\Theta}(z)\overline{W_{\Theta}(w)} = 2i(z - \bar{w})K^*(T - zI)^{-1}(T^* - \bar{w}I)^{-1}K.$$

Setting  $z = w = -i$  we obtain

$$1 - |W_{\Theta}(-i)|^2 = 4K^*(T + iI)^{-1}(T^* - iI)^{-1}K.$$

Finally, since  $T^* - iI = (T + iI)^*$ , the last expression equals  $4\|(T + iI)^{-1}K\|^2$ , which completes the proof.  $\square$

Formula (11) shows that the dissipation coefficient can be expressed directly in terms of the main operator  $T$  and the channel direction  $K$ , without explicit reference to the c-entropy.

The notions introduced in this section (particularly the scalar formulation of L-systems of the form (7) and the associated invariants of c-entropy and dissipation coefficient) provide the analytical foundation for the interpolation models developed in the sequel. In the next section, we construct an explicit interpolation L-system in the Pick form governed by the interpolation data  $\{(z_\ell, v_\ell)\}$ .

### 3. System Interpolation and L-systems in the Pick Form

We now recall the L-system formulation of the Nevanlinna-Pick interpolation problem and the following general definition of interpolation systems found in [3]. Let  $E$  be a finite-dimensional Hilbert space and let  $\{z_\ell, v_\ell\}$  denote the interpolation data as described below.

**DEFINITION 3** ([3]). Let  $\Theta$  be the Livšic canonical system of the form (2) and  $V_\Theta(z)$  its impedance function defined by (3),(5). Then  $\Theta$  is called an **interpolation system** (solution) in the Nevanlinna-Pick interpolation problem for the data  $\{z_\ell \in \mathbb{C}_+, \ell = 1, \dots, m\}$  and  $\{v_\ell \in [E, E], \text{Im } v_\ell \geq 0, \ell = 1, \dots, m\}$  if

$$V_\Theta(z_\ell) = v_\ell, \quad \ell = 1, \dots, m.$$

For the remainder of this paper we, however, restrict our attention to the scalar case  $E = \mathbb{C}$  and L-systems of the form (7). In this setting, each interpolation value  $v_\ell$  is a complex number with  $\text{Im } v_\ell > 0$ , so that the interpolation data  $\{(z_\ell, v_\ell)\}$  consist of points in the upper half-plane  $\mathbb{C}_+$ . All subsequent constructions and results will therefore be formulated for  $E = \mathbb{C}$ .

Following [3], [1] we set

$$(12) \quad \mathbb{P} = \left( \frac{v_k - \bar{v}_j}{z_k - \bar{z}_j} \right)_{k,j=1,\dots,m}, \quad \mathbb{Q} = \left( \frac{z_k v_k - \bar{z}_j \bar{v}_j}{z_k - \bar{z}_j} \right)_{k,j=1,\dots,m}.$$

We now summarize the structural results on interpolation systems obtained in [3]. Suppose  $\{z_k\}_{k=1}^m \subset \mathbb{C}_+$  and  $\{v_k\}_{k=1}^m \subset \mathbb{C}_+$  are interpolation data for which the Pick matrix  $\mathbb{P}$  in (12) is strictly positive.<sup>1</sup> In this case, there exists a scattering interpolation system  $\Theta$  with state space of dimension  $m$  that solves the interpolation problem for this data.

**Construction of the system.** Consider the space  $\mathbb{C}^m$  with inner product

$$(\xi, \eta)_{\mathbb{C}^m} = \eta^* \mathbb{P} \xi.$$

The operator  $\vec{A} = \mathbb{P}^{-1} \mathbb{Q}$  is self-adjoint with respect to this inner product. Let

$$\vec{g} = \mathbb{P}^{-1} \varphi, \quad \varphi = \begin{pmatrix} v_1 \\ \vdots \\ v_m \end{pmatrix},$$

and define

$$(13) \quad \vec{T} = \vec{A} + i(\cdot, \vec{g})_{\mathbb{C}^m} \vec{g}, \quad \vec{K}c = c \cdot \vec{g}.$$

<sup>1</sup>A matrix is called strictly positive if it is non-negative and invertible.

Then  $\text{Im } \vec{T} = \vec{K} \vec{K}^*$ , and the Livšic canonical scattering system

$$\vec{\Theta} = \begin{pmatrix} \vec{T} & \vec{K} & 1 \\ \mathbb{C}_{\mathbb{P}}^m & & \mathbb{C} \end{pmatrix}$$

is well defined. The associated impedance function has the form

$$(14) \quad V_{\vec{\Theta}}(z) = \vec{K}^* (\text{Re } \vec{T} - zI)^{-1} \vec{K}.$$

A direct calculation shows that  $V_{\vec{\Theta}}(z_k) = v_k$  for  $k = 1, \dots, m$ . Indeed, since  $\text{Re } \vec{T} = \vec{A} = \mathbb{P}^{-1}\mathbb{Q}$  and  $\vec{g} = \mathbb{P}^{-1}\varphi$ , we have

$$\begin{aligned} V_{\vec{\Theta}}(z) &= ((\mathbb{P}^{-1}\mathbb{Q} - zI)^{-1}\vec{g}, \vec{g})_{\mathbb{C}_{\mathbb{P}}^m} = (\mathbb{P}(\mathbb{P}^{-1}\mathbb{Q} - zI)^{-1}\vec{g}, \vec{g})_{\mathbb{C}^m} \\ &= (\mathbb{P}(\mathbb{P}^{-1}\mathbb{Q} - zI)^{-1}\mathbb{P}^{-1}\varphi, \mathbb{P}^{-1}\varphi)_{\mathbb{C}^m} = ((\mathbb{P}^{-1}\mathbb{Q} - zI)^{-1}\mathbb{P}^{-1}\varphi, \varphi)_{\mathbb{C}^m} \\ &= ((\mathbb{Q} - z\mathbb{P})^{-1}\varphi, \varphi)_{\mathbb{C}^m} = \varphi^* (\mathbb{Q} - z\mathbb{P})^{-1} \varphi. \end{aligned}$$

Using the definitions of  $\mathbb{P}$  and  $\mathbb{Q}$ , one verifies that

$$(\mathbb{Q} - z_k\mathbb{P})_{kj} = \frac{z_k v_k - \bar{z}_j \bar{v}_j}{z_k - \bar{z}_j} - z_k \frac{v_k - \bar{v}_j}{z_k - \bar{z}_j} = \bar{v}_j, \quad j = 1, \dots, m,$$

so the  $k$ -th row of  $\mathbb{Q} - z_k\mathbb{P}$  equals  $(\bar{v}_1, \dots, \bar{v}_m) = \varphi^*$ . Hence

$$e_k^T (\mathbb{Q} - z_k\mathbb{P}) = \varphi^*,$$

and therefore

$$\varphi^* (\mathbb{Q} - z_k\mathbb{P})^{-1} = e_k^T,$$

where  $e_k$  denotes the column vector in  $\mathbb{C}^m$  whose  $k$ -th entry is 1 and all other entries are 0. Therefore,

$$V_{\vec{\Theta}}(z_k) = ((\mathbb{Q} - z_k\mathbb{P})^{-1}\varphi, \varphi)_{\mathbb{C}^m} = \varphi^* (\mathbb{Q} - z_k\mathbb{P})^{-1} \varphi = e_k^T \varphi = v_k,$$

as claimed.

Thus  $\vec{\Theta}$  is indeed a solution of the Nevanlinna-Pick interpolation problem. We will refer to this realization as the **Livšic system in the Pick form**.

Recall that a bounded operator  $T$  in a Hilbert space is called *dissipative* if

$$\text{Im}(Tx, x) \geq 0, \quad x \in \mathcal{H}.$$

For the operator  $\vec{T}$  defined in (13), one computes

$$\text{Im } \vec{T} = \frac{1}{2i} (\vec{T} - \vec{T}^*) = (\cdot, \vec{g})_{\mathbb{C}_{\mathbb{P}}^m} \vec{g} = \vec{K} \vec{K}^*.$$

Since  $\vec{K} \vec{K}^*$  is positive semidefinite, we obtain for every  $x \in \mathbb{C}_{\mathbb{P}}^m$

$$(\text{Im } \vec{T} x, x) = (\vec{K} \vec{K}^* x, x) = \|\vec{K}^* x\|^2 \geq 0.$$

Therefore  $\vec{T}$  is dissipative.

It is shown in [3] that if the canonical scattering system of the form (7)

$$\Theta = \begin{pmatrix} T & K & 1 \\ \mathcal{H} & & \mathbb{C} \end{pmatrix}, \quad \text{Im } T = KK^*,$$

is an interpolation system for the same data with  $\dim \mathcal{H} = m$ , provided

$$(15) \quad \text{cls}\{(T - z_k I)^{-1} K \mathbb{C} : k = 1, \dots, m\} = \mathcal{H},$$

then  $\mathbb{P}$  is strictly positive and  $\Theta$  is unitarily equivalent to the system  $\vec{\Theta}$  in the Pick form.

Moreover, when  $\mathbb{P} > 0$ , the interpolation values corresponding to eigenvalues of  $\vec{T}$  are necessarily equal to  $i$ . More precisely, suppose that  $z_{k_1}, \dots, z_{k_p}$  is a (nonempty) subset of the interpolation nodes that are eigenvalues of  $\vec{T}$ . Then

$$v_{k_1} = \dots = v_{k_p} = i.$$

Conversely, if for some indices  $k_1, \dots, k_p$  the interpolation data satisfy

$$v_{k_1} = \dots = v_{k_p} = i,$$

then the corresponding nodes  $z_{k_1}, \dots, z_{k_p}$  are eigenvalues of  $\vec{T}$ .

This correspondence follows from the Cayley transform relation between the impedance and transfer functions (see (8)), since the condition  $V_{\vec{\Theta}}(z_k) = i$  is equivalent to a pole of  $W_{\vec{\Theta}}(z)$  at  $z = z_k$ , and hence to  $z_k$  being an eigenvalue of  $\vec{T}$ . A detailed proof can be found in [3, Theorems 11.6.3–11.6.4].

The preceding characterization highlights the distinguished role of the value  $i$ . We now turn to the special case in which all interpolation values satisfy  $v_k = i$ , where the corresponding interpolation system admits an explicit model realization.

**Explicit model for  $v_k = i$ .** The case when all interpolation values equal  $i$  admits a simple model realization. Define

$$(16) \quad T_{\Delta} = \begin{pmatrix} z_1 & 2i\sqrt{\operatorname{Im} z_1 \cdot \operatorname{Im} z_2} & \cdots & 2i\sqrt{\operatorname{Im} z_1 \cdot \operatorname{Im} z_m} \\ 0 & z_2 & \cdots & 2i\sqrt{\operatorname{Im} z_2 \cdot \operatorname{Im} z_m} \\ \vdots & \vdots & \ddots & \vdots \\ 0 & 0 & \cdots & z_m \end{pmatrix},$$

so that  $\operatorname{Im} T_{\Delta} = (\cdot, g_{\Delta})g_{\Delta}$  with

$$g_{\Delta} = \begin{pmatrix} \sqrt{\operatorname{Im} z_1} \\ \sqrt{\operatorname{Im} z_2} \\ \vdots \\ \sqrt{\operatorname{Im} z_m} \end{pmatrix}.$$

It was shown in [3, Theorem 11.6.5] that the corresponding L-system

$$(17) \quad \Theta_{\Delta} = \begin{pmatrix} T_{\Delta} & K_{\Delta} & 1 \\ \mathbb{C}^m & \mathbb{C} & \mathbb{C} \end{pmatrix}, \quad K_{\Delta}(c) = c \cdot g_{\Delta},$$

has transfer function

$$(18) \quad W_{\Theta_{\Delta}}(z) = \prod_{k=1}^m \frac{z - \bar{z}_k}{z - z_k},$$

and impedance function

$$V_{\Theta_{\Delta}}(z) = i \frac{W_{\Theta_{\Delta}}(z) - 1}{W_{\Theta_{\Delta}}(z) + 1}.$$

Clearly  $V_{\Theta_{\Delta}}(z_k) = i$  for  $k = 1, \dots, m$ . Substituting (18) into the Cayley transform relation above we obtain the following explicit formula for the impedance function:

$$(19) \quad V_{\Theta_{\Delta}}(z) = i \frac{\prod_{k=1}^m (z - \bar{z}_k) - \prod_{k=1}^m (z - z_k)}{\prod_{k=1}^m (z - \bar{z}_k) + \prod_{k=1}^m (z - z_k)}, \quad z \in \mathbb{C}_+.$$

It follows from the construction and from [3, Chapter 11] that the interpolation L-system  $\Theta_\Delta$  is minimal.

Furthermore, for any other interpolation system  $\Theta$  with the same data and  $\dim \mathcal{H} = m$ , the transfer functions coincide, and  $\Theta$  is unitarily equivalent to  $\Theta_\Delta$  (see [3, Theorem 11.6.5]). Thus the solution is unique up to unitary equivalence.

In a summary, we have described the interpolation L-systems in the Pick form, following [3]. For strictly positive Pick data, one obtains a canonical scattering L-system  $\tilde{\Theta}$  whose state-space operator  $\tilde{T}$  is dissipative and uniquely determined up to unitary equivalence. The spectral properties of  $\tilde{T}$  reflect the interpolation values: if a node  $z_k$  is an eigenvalue of  $\tilde{T}$ , then the corresponding value must be  $v_k = i$ , and conversely, whenever  $v_k = i$  the point  $z_k$  belongs to the spectrum of  $\tilde{T}$ . In the special case when all interpolation values equal  $i$ , the system admits an explicit model realization  $\Theta_\Delta$ , and every other solution is unitarily equivalent to it.

These general interpolation results provide the foundation for the explicit constructions developed in the next section. In particular, we now turn to the study of L-systems associated with multiplication operators, which will serve as the building blocks for the subsequent analysis of coupling, c-entropy, and dissipation coefficients.

#### 4. Multiplication Operators and Coupling of L-systems

In this section we present, in prose, the one-dimensional multiplication-operator model and the coupling of such canonical L-systems, recording the explicit formulas for the main and channel operators as well as the resulting transfer and impedance functions. We also state the multiplicativity of transfer functions under coupling. The material is somewhat standard (see [9, 8, 6, 5, 12]) and will be used later in our discussion of c-entropy and the dissipation coefficient.

**Multiplication operator model.** Let  $\mathcal{H}$  be a one-dimensional Hilbert space with normalized basis vector  $h_0 \in \mathcal{H}$ . For a fixed  $\lambda_0 \in \mathbb{C}$  with  $\text{Im } \lambda_0 > 0$ , define the multiplication operator

$$(20) \quad Th = \lambda_0 h, \quad h \in \mathcal{H}.$$

Its adjoint is  $T^*h = \bar{\lambda}_0 h$ , so that

$$\text{Im } T = (\text{Im } \lambda_0)I, \quad \text{Re } T = (\text{Re } \lambda_0)I.$$

Introducing the channel operator

$$(21) \quad Kc = (\sqrt{\text{Im } \lambda_0} c)h_0, \quad c \in \mathbb{C},$$

one checks that  $KK^* = (\text{Im } \lambda_0)I = \text{Im } T$ . Thus the L-system

$$(22) \quad \Theta = \begin{pmatrix} T & K & 1 \\ \mathcal{H} & \mathbb{C} & \end{pmatrix}$$

is well defined. Since  $\dim \mathcal{H} = 1$ , the multiplication model (22) is automatically minimal. Its transfer and impedance functions take the simple closed forms

$$(23) \quad W_\Theta(z) = 1 - 2i \frac{\text{Im } \lambda_0}{\lambda_0 - z} = \frac{\bar{\lambda}_0 - z}{\lambda_0 - z},$$

$$(24) \quad V_\Theta(z) = \frac{\text{Im } \lambda_0}{\text{Re } \lambda_0 - z}.$$

By inspection,  $V_\Theta(z)$  is a Herglotz-Nevanlinna function. This one-dimensional multiplication model provides the simplest nontrivial example of a dissipative L-system and will serve as a building block for more complicated constructions.

**Coupling of multiplication operator L-systems.** Now suppose we have two such systems associated with multiplication operators

$$(25) \quad T_1 h = \lambda_0 h, \quad T_2 h = \mu_0 h, \quad h \in \mathcal{H},$$

with corresponding L-systems  $\Theta_1$  and  $\Theta_2$  of the form (22). Following [5], their coupling is defined by

$$(26) \quad \Theta = \begin{pmatrix} \mathbf{T} & \mathbf{K} & 1 \\ \mathcal{H} \oplus \mathcal{H} & & \mathbb{C} \end{pmatrix},$$

where

$$(27) \quad \mathbf{T} = \begin{pmatrix} T_1 & 2iK_1K_2^* \\ 0 & T_2 \end{pmatrix}, \quad \mathbf{K} = \begin{pmatrix} K_1 \\ K_2 \end{pmatrix}.$$

A direct computation shows that  $\text{Im } \mathbf{T} = \mathbf{K}\mathbf{K}^*$ , so  $\Theta$  is again a canonical L-system. The transfer function of the coupled system satisfies the multiplicative identity

$$(28) \quad W_\Theta(z) = W_{\Theta_1}(z) \cdot W_{\Theta_2}(z),$$

which is the essence of the so-called Multiplication Theorem (see also Appendix A).

The corresponding impedance function admits the explicit representation

$$(29) \quad V_\Theta(z) = \frac{\text{Im}(\lambda_0 + \mu_0)z - \text{Im}(\lambda_0\mu_0)}{\text{Re}(\lambda_0 + \mu_0)z - \text{Re}(\lambda_0\mu_0) - z^2}.$$

This formula follows from substituting (23) into  $V_\Theta(z) = i \frac{W_\Theta(z)-1}{W_\Theta(z)+1}$  and simplifying.

**LEMMA 2 (Minimality under finite coupling).** *Let  $\Theta_1, \dots, \Theta_n$  be minimal canonical L-systems of the form (22) acting in one-dimensional Hilbert spaces, and let  $\Theta = \Theta_1 \cdot \Theta_2 \cdots \Theta_n$  denote their (iterated) coupling. Then the coupled L-system  $\Theta$  is minimal.*

**PROOF.** We first prove the claim for  $n = 2$ . Let  $\Theta_1$  and  $\Theta_2$  be as in the statement and let  $\Theta$  be their coupling. Minimality of a canonical L-system

$$\Theta = \begin{pmatrix} T & K & 1 \\ \mathcal{H} & & \mathbb{C} \end{pmatrix}$$

means

$$\text{cls}\{(T - zI)^{-1}Kc : z \in \rho(T)\} = \mathcal{H}.$$

Since  $\dim \mathcal{H}_1 = \dim \mathcal{H}_2 = 1$ , each  $\Theta_j$  is minimal.

For the coupling  $\Theta$  acting in  $\mathcal{H}_1 \oplus \mathcal{H}_2$  we have

$$\mathbf{T} = \begin{pmatrix} T_1 & 2iK_1K_2^* \\ 0 & T_2 \end{pmatrix}, \quad \mathbf{K} = \begin{pmatrix} K_1 \\ K_2 \end{pmatrix}.$$

For  $z \in \rho(\mathbf{T})$  the resolvent is upper triangular,

$$(\mathbf{T} - zI)^{-1} = \begin{pmatrix} (T_1 - zI)^{-1} & * \\ 0 & (T_2 - zI)^{-1} \end{pmatrix},$$

hence

$$(\mathbf{T} - zI)^{-1}\mathbf{K}c = \begin{pmatrix} (T_1 - zI)^{-1}K_1c + * \\ (T_2 - zI)^{-1}K_2c \end{pmatrix}.$$

Varying  $c \in \mathbb{C}$  and  $z \in \rho(\mathbf{T})$  shows that the cyclic subspace generated by  $(\mathbf{T} - zI)^{-1}\mathbf{K}\mathbf{C}$  contains both  $\mathcal{H}_1$  and  $\mathcal{H}_2$ . Therefore  $\Theta$  is minimal.

For general  $n$ , set  $\Theta^{(1)} = \Theta_1$  and define iteratively  $\Theta^{(k)} = \Theta^{(k-1)} \cdot \Theta_k$ . By the already proved two-factor case, if  $\Theta^{(k-1)}$  is minimal then so is  $\Theta^{(k)}$ . Since  $\Theta^{(1)}$  is minimal, induction yields minimality of  $\Theta^{(n)} = \Theta$ .  $\square$

**REMARK 3** (Invariance under unitary equivalence). *If two L-systems  $\Theta_1, \Theta_2$  of the form (2) are unitarily equivalent, then (see [3])  $W_{\Theta_1}(z) \equiv W_{\Theta_2}(z)$  and, consequently*

$$\mathcal{S}(\Theta_1) = \mathcal{S}(\Theta_2), \quad \mathcal{D}(\Theta_1) = \mathcal{D}(\Theta_2).$$

*Hence  $\mathcal{S}$  and  $\mathcal{D}$  are intrinsic invariants of the interpolation problem, independent of the choice of realization.*

The coupling construction preserves the canonical form of the L-system and multiplies transfer functions as in (28). Together with the continuity of Donoghue data classes established in [5], this framework provides the theoretical foundation for the introduction of c-entropy and dissipation coefficients in the next section. For completeness, an independent proof of the Multiplication Theorem is included in Appendix A.

## 5. c-Entropy and DC of an L-system with multiplication operator

Having introduced the definitions of c-entropy and dissipation coefficient in Section 2, and developed in Section 4 the explicit models of multiplication-operator L-systems together with their couplings, we are now in a position to evaluate these invariants concretely. The results presented below follow [5] and provide closed-form expressions that will serve as the basis for later applications.

In this section we evaluate explicitly the c-entropy and the dissipation coefficient for L-systems associated with multiplication operators, and then extend these computations to their couplings. The relevant definitions of c-entropy and dissipation coefficient were introduced in Section 2, and here we apply them to obtain closed-form expressions. The results summarized below follow [5].

**Single multiplication operator.** Consider an L-system  $\Theta$  of the form (22) built from a multiplication operator  $Th = \lambda_0 h$  with  $\text{Im } \lambda_0 > 0$ . Its transfer function (23) can be used to compute the c-entropy directly. Indeed,

$$|W_{\Theta}(-i)| = \left| \frac{\bar{\lambda}_0 + i}{\lambda_0 + i} \right| = \sqrt{\frac{(\text{Re } \lambda_0)^2 + (1 - \text{Im } \lambda_0)^2}{(\text{Re } \lambda_0)^2 + (1 + \text{Im } \lambda_0)^2}}.$$

By definition,  $\mathcal{S} = -\ln |W_{\Theta}(-i)|$ , which simplifies to

$$(30) \quad \mathcal{S} = \frac{1}{2} \ln \left( \frac{(\text{Re } \lambda_0)^2 + (1 + \text{Im } \lambda_0)^2}{(\text{Re } \lambda_0)^2 + (1 - \text{Im } \lambda_0)^2} \right).$$

The dissipation coefficient  $\mathcal{D}$  of  $\Theta$  is obtained from  $\mathcal{D} = 1 - e^{-2\mathcal{S}}$ , yielding

$$(31) \quad \mathcal{D} = \frac{4 \text{Im } \lambda_0}{(\text{Re } \lambda_0)^2 + (1 + \text{Im } \lambda_0)^2}.$$

Thus, for the one-dimensional multiplication model both invariants are available in closed form in terms of the real and imaginary parts of  $\lambda_0$ .

**Coupling of two multiplication models.** Now let  $\Theta$  be the coupling of two systems  $\Theta_1$  and  $\Theta_2$  of the form (22), with defining parameters  $\lambda_0$  and  $\mu_0$  respectively. From the multiplicativity of transfer functions (28), we have

$$W_{\Theta}(-i) = W_{\Theta_1}(-i) W_{\Theta_2}(-i),$$

and therefore

$$\mathcal{S} = -\ln |W_{\Theta}(-i)| = -\ln |W_{\Theta_1}(-i)| - \ln |W_{\Theta_2}(-i)| = \mathcal{S}_1 + \mathcal{S}_2.$$

Hence the c-entropy is additive under coupling, justifying the terminology *coupling entropy*. If either  $\mathcal{S}_1$  or  $\mathcal{S}_2$  is infinite, then so is  $\mathcal{S}$ .

In terms of  $\lambda_0$  and  $\mu_0$ , the c-entropy of the coupled system can be written as

$$(32) \quad \mathcal{S} = \frac{1}{2} \ln \left( \frac{(\operatorname{Re} \lambda_0)^2 + (1 + \operatorname{Im} \lambda_0)^2}{(\operatorname{Re} \lambda_0)^2 + (1 - \operatorname{Im} \lambda_0)^2} \cdot \frac{(\operatorname{Re} \mu_0)^2 + (1 + \operatorname{Im} \mu_0)^2}{(\operatorname{Re} \mu_0)^2 + (1 - \operatorname{Im} \mu_0)^2} \right).$$

**Dissipation coefficient under coupling.** If  $\mathcal{D}$ ,  $\mathcal{D}_1$ , and  $\mathcal{D}_2$  denote the dissipation coefficients of  $\Theta$ ,  $\Theta_1$ , and  $\Theta_2$  respectively, then the identity  $\mathcal{S} = \mathcal{S}_1 + \mathcal{S}_2$  combined with  $\mathcal{D} = 1 - e^{-2\mathcal{S}}$  gives

$$1 - \mathcal{D} = (1 - \mathcal{D}_1)(1 - \mathcal{D}_2),$$

or equivalently

$$(33) \quad \mathcal{D} = \mathcal{D}_1 + \mathcal{D}_2 - \mathcal{D}_1 \mathcal{D}_2.$$

Thus, the dissipation coefficient of the coupling is determined algebraically by the coefficients of its components.

Finally, substituting the explicit formulas (31) for  $\mathcal{D}_1$  and  $\mathcal{D}_2$  yields a closed form in terms of  $\lambda_0$  and  $\mu_0$ :

$$(34) \quad \mathcal{D} = \frac{4 \operatorname{Im} \lambda_0 (|\mu_0|^2 + 1) + 4 \operatorname{Im} \mu_0 (|\lambda_0|^2 + 1)}{[(\operatorname{Re} \lambda_0)^2 + (1 + \operatorname{Im} \lambda_0)^2][(\operatorname{Re} \mu_0)^2 + (1 + \operatorname{Im} \mu_0)^2]}.$$

**REMARK 4 (Coupling versus equivalence).** *The interpolation system  $\Theta_{\Delta}$  of the form (17) constructed in Section 3 is not literally a coupling of one-dimensional multiplication models. Its construction is canonical and tied to the interpolation data. However, its transfer function*

$$W_{\Theta_{\Delta}}(z) = \prod_{k=1}^m \frac{z - \bar{z}_k}{z - z_k}$$

*coincides with that of the  $m$  coupled multiplication-operator  $L$ -systems obtained from parameters  $\lambda_0 = z_k$ . Thus  $\Theta_{\Delta}$  is unitarily equivalent to such a coupling, since both realizations are minimal (see Section 3 and Lemma 2) and have identical transfer functions.*

In a summary for this section we note that for multiplication-operator  $L$ -systems, the c-entropy and dissipation coefficient admit explicit formulas (30) and (31). Under coupling, c-entropy is additive (32) and the dissipation coefficient satisfies the nonlinear law (33), with the closed form (34) available in terms of the defining parameters. These explicit expressions form the basis for the quantitative analysis of  $L$ -system couplings in the sequel.

## 6. Interpolation model $\Theta_\Delta$ and its invariants

We now arrive at the main result of this paper. In Section 3 we introduced the explicit interpolation system  $\Theta_\Delta$  given in (17), with transfer function (18). In Section 4 we developed the multiplication operator model and its coupling, and in Section 5 we obtained closed formulas for the c-entropy and dissipation coefficient in this setting. Bringing these elements together, we can evaluate the invariants of  $\Theta_\Delta$ .

The following theorem establishes a closed formula for the c-entropy of the interpolation system.

**THEOREM 5.** *Let  $\Theta_\Delta$  be the interpolation L-system of the form (17), with transfer function given by (18). Then its c-entropy is*

$$(35) \quad \mathcal{S}(\Theta_\Delta) = \frac{1}{2} \sum_{k=1}^m \ln \left( \frac{(\operatorname{Re} z_k)^2 + (1 + \operatorname{Im} z_k)^2}{(\operatorname{Re} z_k)^2 + (1 - \operatorname{Im} z_k)^2} \right).$$

**PROOF.** Write  $z_k = x_k + iy_k$  with  $x_k = \operatorname{Re} z_k \in \mathbb{R}$  and  $y_k = \operatorname{Im} z_k > 0$ . By Definition 1, the c-entropy is

$$\mathcal{S}(\Theta_\Delta) = -\ln |W_{\Theta_\Delta}(-i)| \quad (\text{see (9)}).$$

Using the explicit form of the transfer function of  $\Theta_\Delta$  from (18), that is,

$$W_{\Theta_\Delta}(z) = \prod_{k=1}^m \frac{z - \bar{z}_k}{z - z_k},$$

we evaluate at  $z = -i$ :

$$|W_{\Theta_\Delta}(-i)| = \prod_{k=1}^m \left| \frac{-i - \bar{z}_k}{-i - z_k} \right| = \prod_{k=1}^m \left| \frac{-i - (x_k - iy_k)}{-i - (x_k + iy_k)} \right| = \prod_{k=1}^m \left| \frac{x_k - i(y_k - 1)}{x_k + i(1 + y_k)} \right|.$$

Taking absolute values yields,

$$\left| \frac{x_k - i(y_k - 1)}{x_k + i(1 + y_k)} \right| = \sqrt{\frac{x_k^2 + (y_k - 1)^2}{x_k^2 + (1 + y_k)^2}} = \sqrt{\frac{(\operatorname{Re} z_k)^2 + (1 - \operatorname{Im} z_k)^2}{(\operatorname{Re} z_k)^2 + (1 + \operatorname{Im} z_k)^2}}.$$

Hence

$$|W_{\Theta_\Delta}(-i)| = \prod_{k=1}^m \sqrt{\frac{(\operatorname{Re} z_k)^2 + (1 - \operatorname{Im} z_k)^2}{(\operatorname{Re} z_k)^2 + (1 + \operatorname{Im} z_k)^2}}.$$

Using properties of the logarithm we obtain

$$\begin{aligned} \mathcal{S}(\Theta_\Delta) &= -\sum_{k=1}^m \frac{1}{2} \ln \left( \frac{(\operatorname{Re} z_k)^2 + (1 - \operatorname{Im} z_k)^2}{(\operatorname{Re} z_k)^2 + (1 + \operatorname{Im} z_k)^2} \right) \\ &= \frac{1}{2} \sum_{k=1}^m \ln \left( \frac{(\operatorname{Re} z_k)^2 + (1 + \operatorname{Im} z_k)^2}{(\operatorname{Re} z_k)^2 + (1 - \operatorname{Im} z_k)^2} \right), \end{aligned}$$

which is precisely (35). □

**REMARK 6.** *Note that each Blaschke factor*

$$\frac{\bar{z}_k - z}{z_k - z}$$

in (18) coincides with the transfer function of the one-dimensional multiplication L-system

$$(36) \quad \Theta_k = \begin{pmatrix} T_k & K_k & 1 \\ \mathcal{H} & & \mathbb{C} \end{pmatrix}$$

of the form (22) with parameter  $\lambda_0 = z_k$  (see the single-model formula (23) in Section 4). By the Multiplication Theorem, (see Theorem 16 in Appendix A) coupling these systems  $\Theta$  multiplies transfer functions as in (28):

$$W_{\Theta}(z) = \prod_{k=1}^m W_{\Theta_k}(z) = W_{\Theta_{\Delta}}(z)$$

Evaluating at  $z = -i$  and using the definition of c-entropy together with the single-model entropy formula (30),

$$\begin{aligned} \mathcal{S}(\Theta_{\Delta}) &= -\ln|W_{\Theta_{\Delta}}(-i)| = -\sum_{k=1}^m \ln|W_{\Theta_k}(-i)| = \sum_{k=1}^m \mathcal{S}(\Theta_k) \\ &= \frac{1}{2} \sum_{k=1}^m \ln \left( \frac{(\operatorname{Re} z_k)^2 + (1 + \operatorname{Im} z_k)^2}{(\operatorname{Re} z_k)^2 + (1 - \operatorname{Im} z_k)^2} \right). \end{aligned}$$

This reproduces (35) and explicitly connects the result to the factorization/coupling mechanism developed in Sections 4-5. Moreover,  $\Theta_{\Delta}$  is minimal (see Section 3), and the coupled system  $\Theta = \Theta_1 \cdot \dots \cdot \Theta_m$  is minimal by Lemma 2. Hence  $\Theta_{\Delta}$  and  $\Theta$  are unitarily equivalent.

The correspondence between the interpolation system and its coupled multiplication components established in Remark 6 naturally leads to a characterization of how the location of the interpolation points affects the c-entropy. The following theorem formulates these conditions explicitly.

**THEOREM 7.** *Let  $\Theta_{\Delta}$  be the interpolation L-system in the model form (17) corresponding to interpolation data  $\{z_k\}_{k=1}^m \subset \mathbb{C}_+$ . Then:*

- (a) *The c-entropy  $\mathcal{S}(\Theta_{\Delta})$  is **infinite** if and only if at least one node  $z_k = i$ .*

*Assuming in addition that all nodes satisfy  $z_k \neq i$ , we have:*

- (b) *The c-entropy  $\mathcal{S}(\Theta_{\Delta})$  is **finite and maximal** precisely when all nodes  $z_k$  are purely imaginary ( $\operatorname{Re} z_k = 0$ ),*  
(c) *If at least one node has  $\operatorname{Re} z_k \neq 0$ , then  $\mathcal{S}(\Theta_{\Delta})$  is finite but strictly below its maximal value.*

**PROOF.** Let  $z_k = a_k + ib_k$  with  $b_k > 0$ . For each  $k$  consider the one-dimensional multiplication-operator L-system  $\Theta_k$  with parameter  $\lambda_0 = z_k$ . Its transfer function is  $W_{\Theta_k}(z) = \frac{\bar{z}_k - z}{z_k - z}$  (see (23)), which coincides with the  $k$ -th Blaschke factor of  $W_{\Theta_{\Delta}}(z)$  in (18). By the Multiplication Theorem, coupling the systems  $\{\Theta_k\}$  produces a canonical L-system  $\Theta$  whose transfer function satisfies

$$W_{\Theta}(z) = \prod_{k=1}^m W_{\Theta_k}(z) = W_{\Theta_{\Delta}}(z).$$

In particular,

$$(37) \quad \mathcal{S}(\Theta_{\Delta}) = -\ln|W_{\Theta_{\Delta}}(-i)| = -\sum_{k=1}^m \ln|W_{\Theta_k}(-i)| = \sum_{k=1}^m \mathcal{S}(\Theta_k).$$

Remark 9 in [5] asserts that  $\mathcal{S}(\Theta_k)$  is infinite exactly when  $z_k = i$ , and that for fixed  $b_k > 0$  the finite maximum is attained when  $\operatorname{Re} z_k = 0$ . Part (a) follows from (37): the sum is infinite iff at least one summand  $\mathcal{S}(\Theta_k)$  is infinite, which occurs exactly when  $z_k = i$ .

Under the standing assumption  $z_k \neq i$  for all  $k$ , each  $\mathcal{S}(\Theta_k)$  is finite. For fixed  $b_k = \operatorname{Im} z_k$ , the single-node entropy  $\mathcal{S}(\Theta_k)$  is maximized at  $\operatorname{Re} z_k = 0$  and strictly decreases when  $\operatorname{Re} z_k \neq 0$  by Remark 9 in [5]. Summing (37) over  $k$  yields (b) and (c).  $\square$

REMARK 8. *The conditions of Theorem 7 admit a clear geometric interpretation in the upper half-plane. Each interpolation point  $z_k \in \mathbb{C}_+$  determines a corresponding parameter  $\lambda_k = z_k = a_k + ib_k$  of the multiplication model, where  $b_k = \operatorname{Im} \lambda_k > 0$  quantifies the local dissipation. The value of the  $c$ -entropy reflects how far the point  $z_k$  lies from the imaginary axis:*

- *If  $\operatorname{Re} \lambda_k = 0$ , then  $z_k$  lies on the vertical line through the origin, and the corresponding  $L$ -system contributes its maximal finite share of entropy.*
- *If  $\operatorname{Re} \lambda_k \neq 0$ , the point  $z_k$  departs from this axis, the dissipative part decreases, and the contribution to  $\mathcal{S}$  diminishes accordingly.*
- *When  $\lambda_k = i$ , the interpolation node reaches the extreme point of maximal dissipation in  $\mathbb{C}_+$ , producing infinite  $c$ -entropy.*

Hence, the global  $c$ -entropy of  $\Theta_\Delta$  is governed by the collective geometry of the interpolation nodes  $\{z_k\}$  in  $\mathbb{C}_+$ , with the imaginary parts controlling the magnitude of dissipation and the real parts determining how close the system is to its maximal or infinite-entropy regimes.

The geometric insight of Remark 8 clarifies how the analytic placement of the interpolation nodes in  $\mathbb{C}_+$  controls both dissipation and entropy. In the next section, we construct the explicit interpolation model  $\Theta_\Delta$  and examine how these geometric and functional invariants are realized in its operator-theoretic structure.

The dissipation coefficient follows immediately from the definition  $\mathcal{D} = 1 - e^{-2\mathcal{S}}$ .

THEOREM 9. *For the interpolation  $L$ -system  $\Theta_\Delta$  the dissipation coefficient is*

$$(38) \quad \mathcal{D}(\Theta_\Delta) = 1 - \prod_{k=1}^m \frac{(\operatorname{Re} z_k)^2 + (1 - \operatorname{Im} z_k)^2}{(\operatorname{Re} z_k)^2 + (1 + \operatorname{Im} z_k)^2}.$$

PROOF. Recall the definition 2 of  $\mathcal{D} = 1 - e^{-2\mathcal{S}}$  (see Section 2) and the entropy formula (35) established above. Then

$$e^{-2\mathcal{S}(\Theta_\Delta)} = \prod_{k=1}^m \frac{(\operatorname{Re} z_k)^2 + (1 - \operatorname{Im} z_k)^2}{(\operatorname{Re} z_k)^2 + (1 + \operatorname{Im} z_k)^2},$$

and hence

$$\mathcal{D}(\Theta_\Delta) = 1 - e^{-2\mathcal{S}(\Theta_\Delta)} = 1 - \prod_{k=1}^m \frac{(\operatorname{Re} z_k)^2 + (1 - \operatorname{Im} z_k)^2}{(\operatorname{Re} z_k)^2 + (1 + \operatorname{Im} z_k)^2},$$

which is precisely (38).  $\square$

We can also note that by Section 3 we have the Blaschke product representation  $W_{\Theta_\Delta}(z) = \prod_{k=1}^m \frac{z - \bar{z}_k}{z - z_k}$  (see (18)), realized as a coupling of one-dimensional multiplication  $L$ -systems with parameters  $\lambda_0 = z_k$  (Section 4, (23), (28)). Evaluating

c-entropy for the single model (Section 5) gives

$$\mathcal{S}_k = \frac{1}{2} \ln \left( \frac{(\operatorname{Re} z_k)^2 + (1 + \operatorname{Im} z_k)^2}{(\operatorname{Re} z_k)^2 + (1 - \operatorname{Im} z_k)^2} \right) \quad \text{and} \quad \mathcal{D}_k = \frac{4 \operatorname{Im} z_k}{(\operatorname{Re} z_k)^2 + (1 + \operatorname{Im} z_k)^2},$$

cf. (30), (31). The coupling law for dissipation (Section 5) states

$$\mathcal{D} = 1 - \prod_{k=1}^m (1 - \mathcal{D}_k), \quad \text{see (33)}.$$

But for each  $k$ ,

$$1 - \mathcal{D}_k = 1 - \frac{4 \operatorname{Im} z_k}{(\operatorname{Re} z_k)^2 + (1 + \operatorname{Im} z_k)^2} = \frac{(\operatorname{Re} z_k)^2 + (1 - \operatorname{Im} z_k)^2}{(\operatorname{Re} z_k)^2 + (1 + \operatorname{Im} z_k)^2}.$$

Therefore

$$\mathcal{D}(\Theta_\Delta) = 1 - \prod_{k=1}^m \frac{(\operatorname{Re} z_k)^2 + (1 - \operatorname{Im} z_k)^2}{(\operatorname{Re} z_k)^2 + (1 + \operatorname{Im} z_k)^2},$$

which coincides with (38).

These formulas express the invariants of the interpolation solution entirely in terms of the interpolation nodes  $\{z_k\}$ , confirming the additivity principle of c-entropy under coupling and its consistency with the multiplicative structure of transfer functions.

It is instructive to examine the special case when all interpolation nodes lie on the imaginary axis. This situation not only simplifies the general formulas but also illustrates clearly how individual nodes contribute to the overall entropy and dissipation. In particular, it highlights the additive behavior for small imaginary parts and the scaling effect when multiple identical nodes are present.

**COROLLARY 4.** *Assume  $z_k = ia_k$  with  $a_k > 0$  for  $k = 1, \dots, m$ . Then the c-entropy and dissipation coefficient of the interpolation system  $\Theta_\Delta$  are*

$$(39) \quad \mathcal{S}(\Theta_\Delta) = \sum_{k=1}^m \ln \left( \frac{1 + a_k}{1 - a_k} \right),$$

$$(40) \quad \mathcal{D}(\Theta_\Delta) = 1 - \prod_{k=1}^m \left( \frac{1 - a_k}{1 + a_k} \right)^2.$$

*Proof.* Substitute  $\operatorname{Re} z_k = 0$  and  $\operatorname{Im} z_k = a_k$  in (35) and (38). Since  $(\operatorname{Re} z_k)^2 + (1 \pm \operatorname{Im} z_k)^2 = (1 \pm a_k)^2$ , we get

$$\mathcal{S}(\Theta_\Delta) = \sum_{k=1}^m \frac{1}{2} \ln \left( \frac{(1 + a_k)^2}{(1 - a_k)^2} \right) = \sum_{k=1}^m \ln \left( \frac{1 + a_k}{1 - a_k} \right),$$

and then  $\mathcal{D}(\Theta_\Delta) = 1 - e^{-2\mathcal{S}(\Theta_\Delta)}$  yields (40).  $\square$

**Remarks.**

(i) When all  $a_k$  coincide, say  $a_k = a$ , the formulas (39) and (40) reduce to

$$\mathcal{S}(\Theta_\Delta) = m \ln \left( \frac{1 + a}{1 - a} \right), \quad \mathcal{D}(\Theta_\Delta) = 1 - \left( \frac{1 - a}{1 + a} \right)^{2m}.$$

This shows that coupling  $m$  identical imaginary nodes simply scales the entropy linearly in  $m$ , while the dissipation coefficient accumulates according to the nonlinear law of Section 5.

(ii) For small values  $a_k \ll 1$ , we may expand around  $a_k = 0$  to get

$$\ln\left(\frac{1+a_k}{1-a_k}\right) = 2a_k + \frac{2}{3}a_k^3 + O(a_k^5),$$

so that

$$\mathcal{S}(\Theta_\Delta) = 2 \sum_{k=1}^m a_k + O\left(\sum_{k=1}^m a_k^3\right), \quad \mathcal{D}(\Theta_\Delta) = 4 \sum_{k=1}^m a_k + O\left(\sum_{k=1}^m a_k^2\right).$$

Consequently, the leading-order linear dependence of  $\mathcal{S}(\Theta_\Delta)$  and  $\mathcal{D}(\Theta_\Delta)$  on the imaginary parts  $a_k$  reflects the weak-dissipation regime of the corresponding multiplication-operator components. Thus, in the case of weakly dissipative nodes (small imaginary parts), both invariants behave additively to leading order. This reflects the fact that each interpolation node contributes approximately independently to the overall entropy and dissipation.

We next give a precise characterization of the interpolation data corresponding to the minimal regime of the c-entropy.

**PROPOSITION 5.** *Let  $\{z_k\}_{k=1}^m \subset \mathbb{C}_+$  be interpolation nodes with  $z_k = a_k + ib_k$  and  $b_k > 0$ , and let  $\Theta_\Delta$  be the interpolation L-system of the form (17) corresponding to the data  $v_k = i$ . Then*

$$(41) \quad \mathcal{S}(\Theta_\Delta) = -\ln |W_{\Theta_\Delta}(-i)| = \frac{1}{2} \sum_{k=1}^m \ln\left(\frac{a_k^2 + (1+b_k)^2}{a_k^2 + (1-b_k)^2}\right) \geq 0.$$

Moreover:

- (i) *The infimum of  $\mathcal{S}(\Theta_\Delta)$  over admissible nodes is 0, and it is not attained for any  $b_k > 0$ .*
- (ii) *For each  $k$ ,  $\ln\left(\frac{a_k^2 + (1+b_k)^2}{a_k^2 + (1-b_k)^2}\right) \downarrow 0$  as either  $b_k \downarrow 0$  or  $|a_k| \rightarrow \infty$ . Consequently,  $\mathcal{S}(\Theta_\Delta) \downarrow 0$  precisely when every node approaches the real axis ( $b_k \downarrow 0$ ) or escapes horizontally ( $|a_k| \rightarrow \infty$ ).*

**PROOF.** For the model L-system  $\Theta_\Delta$  of the form (17) described in Section 3 (with target values  $v_k = i$ ), the transfer function is given by (18), that is

$$W_{\Theta_\Delta}(z) = \prod_{k=1}^m \frac{z - \bar{z}_k}{z - z_k}.$$

Evaluating at  $z = -i$  gives

$$\left| \frac{-i - \bar{z}_k}{-i - z_k} \right| = \left| \frac{a_k - i(1+b_k)}{a_k - i(1-b_k)} \right| = \sqrt{\frac{a_k^2 + (1+b_k)^2}{a_k^2 + (1-b_k)^2}}.$$

Hence

$$-\ln |W_{\Theta_\Delta}(-i)| = \sum_{k=1}^m -\ln \left| \frac{-i - \bar{z}_k}{-i - z_k} \right| = \sum_{k=1}^m \frac{1}{2} \ln\left(\frac{a_k^2 + (1+b_k)^2}{a_k^2 + (1-b_k)^2}\right),$$

confirming (41). Since  $(1+b_k)^2 \geq (1-b_k)^2$  for  $b_k > 0$ , every summand is nonnegative, so  $\mathcal{S}(\Theta_\Delta) \geq 0$ .

If  $\mathcal{S}(\Theta_\Delta) = 0$ , then each summand must vanish, i.e.,

$$a_k^2 + (1 + b_k)^2 = a_k^2 + (1 - b_k)^2,$$

which forces  $b_k = 0$  for all  $k$  but this contradicts  $z_k \in \mathbb{C}_+$  ( $b_k > 0$ ). Therefore the infimum over admissible nodes is 0, but it is not attained (claim (i)).

In order to prove (ii), fix  $a_k$  and let  $b_k \downarrow 0$ . Then

$$\frac{a_k^2 + (1 + b_k)^2}{a_k^2 + (1 - b_k)^2} \longrightarrow 1, \quad \text{hence} \quad \frac{1}{2} \ln \left( \frac{a_k^2 + (1 + b_k)^2}{a_k^2 + (1 - b_k)^2} \right) \longrightarrow 0.$$

Alternatively, for fixed  $b_k > 0$ , as  $|a_k| \rightarrow \infty$  one has

$$\frac{a_k^2 + (1 + b_k)^2}{a_k^2 + (1 - b_k)^2} = 1 + \frac{(1 + b_k)^2 - (1 - b_k)^2}{a_k^2 + (1 - b_k)^2} \longrightarrow 1,$$

and the same logarithmic term tends to 0. Summing over  $k$  yields the stated characterization  $\mathcal{S}(\Theta_\Delta) \downarrow 0$ .

Thus, the limit  $\mathcal{S}(\Theta_\Delta) \rightarrow 0$  characterizes the *minimal regime* of the interpolation system, realized when the interpolation nodes approach the real axis ( $b_k \downarrow 0$ ) or drift horizontally to infinity ( $|a_k| \rightarrow \infty$ ).  $\square$

REMARK 10. *In the special case  $v_\ell = i$ , the c-entropy admits the factorized form*

$$\mathcal{S}(\Theta_\Delta) = \sum_{k=1}^m \ln \left| \frac{z_k + i}{z_k - i} \right|.$$

Hence  $\mathcal{S}(\Theta_\Delta) \downarrow 0$  precisely when each node  $z_k$  approaches the real axis ( $\text{Im } z_k \downarrow 0$ ) or escapes horizontally ( $|\text{Re } z_k| \rightarrow \infty$ ). Geometrically, this is the regime where the Blaschke factors  $\frac{z - \bar{z}_k}{z - z_k}$  have modulus  $\left| \frac{-i - \bar{z}_k}{-i - z_k} \right| \rightarrow 1$  at  $z = -i$ , so that  $|W(-i)| \rightarrow 1$  and  $-\ln |W(-i)| \rightarrow 0$ . By contrast, placing a node at  $z_k = i$  forces  $\mathcal{S}(\Theta_\Delta) = \infty$ , while aligning nodes on the imaginary axis ( $\text{Re } z_k = 0$  with  $z_k \neq i$ ) yields the maximal finite regime discussed earlier.

These asymptotic observations complete the characterization of all entropy regimes (minimal, maximal, and infinite) and prepare the ground for the geometric interpretation developed in Section 8.

The explicit formulas derived above for the c-entropy and dissipation coefficient of the interpolation system  $\Theta_\Delta$ , together with the geometric characterization in Theorem 7 and Remark 8, reveal how the location of interpolation nodes in  $\mathbb{C}_+$  governs the transition between finite, maximal, and infinite c-entropy regimes. In particular, purely imaginary nodes yield the maximal finite c-entropy, while any horizontal displacement reduces it, and the critical node  $z_k = i$  produces divergence of c-entropy. These results demonstrate that the invariants  $\mathcal{S}$  and  $\mathcal{D}$  capture intrinsic geometric information about the interpolation data, linking analytic placement of nodes to the dissipative structure of the corresponding L-system.

The next section focuses on the special case of symmetric interpolation configurations, which represent the equilibrium regime of this balance and naturally admit a physical interpretation in terms of energy exchange within corresponding LC-network analogs.

## 7. Symmetric Interpolation, Physical Interpretation, Examples

We now examine *symmetric interpolation configurations*, in which the interpolation nodes are placed symmetrically with respect to the imaginary axis. This symmetry plays a distinguished role: it yields explicit closed forms for both the transfer and impedance functions of the corresponding interpolation L-system  $\Theta_\Delta$ , and it links the analytic geometry of interpolation data with the energy balance of the associated physical network.

We begin with the simplest nontrivial configuration, a single symmetric pair of nodes. In this case, the transfer function  $W_{\Theta_\Delta}(z)$  and the impedance function  $V_{\Theta_\Delta}(z)$  are those of the *canonical interpolation L-system*  $\Theta_\Delta$  of the form (17), related by the Cayley transform (8). The following lemma provides their explicit analytic form and serves as a prototype for the general multi-pair constructions developed later in Theorem 12.

LEMMA 11 (Single symmetric pair of interpolation nodes). *Let the interpolation data consist of a symmetric pair of nodes*

$$z_1 = a + ib, \quad z_2 = -a + ib, \quad a \neq 0, \quad b > 0.$$

Consider the transfer function  $W_{\Theta_\Delta}(z)$  and the impedance function  $V_{\Theta_\Delta}(z)$  of the interpolation L-system  $\Theta_\Delta$  of the form (17). Then

$$(42) \quad W_{\Theta_\Delta}(z) = \frac{(z - \bar{z}_1)(z + z_1)}{(z - z_1)(z + \bar{z}_1)}, \quad V_{\Theta_\Delta}(z) = \frac{Az}{B^2 - z^2},$$

where

$$A = 2b, \quad B = \sqrt{a^2 + b^2}.$$

In particular,  $V_{\Theta_\Delta}(z_k) = i$  for  $k = 1, 2$ , and  $V_{\Theta_\Delta}(z)$  is a rational Herglotz-Nevanlinna function.

PROOF. Using the formula (18) of the transfer function  $W_{\Theta_\Delta}(z)$  for the symmetric pair  $(z_1, -\bar{z}_1)$ , we get

$$W_{\Theta_\Delta}(z) = \frac{(z - \bar{z}_1)(z + z_1)}{(z - z_1)(z + \bar{z}_1)} = \frac{(z - a + ib)(z + a + ib)}{(z - a - ib)(z + a - ib)}.$$

Substituting  $W_{\Theta_\Delta}(z)$  above into the Cayley transform (8) yields

$$V_{\Theta_\Delta}(z) = i \frac{W_{\Theta_\Delta}(z) - 1}{W_{\Theta_\Delta}(z) + 1} = \frac{2bz}{a^2 + b^2 - z^2} = \frac{Az}{B^2 - z^2},$$

with  $A = 2b$  and  $B^2 = a^2 + b^2$ . To verify the Herglotz-Nevanlinna property, write  $z = x + iy$  with  $y > 0$ , and set  $B^2 = a^2 + b^2$  and  $P = B^2 - x^2 + y^2$ . Then

$$V_{\Theta_\Delta}(z) = A \frac{x + iy}{P - 2ixy} = A \frac{(x + iy)(P + 2ixy)}{P^2 + 4x^2y^2}.$$

A short computation shows

$$(x + iy)(P + 2ixy) = \underbrace{x(B^2 - x^2 - y^2)}_{\text{real}} + i \underbrace{y(B^2 + x^2 + y^2)}_{\text{imag}},$$

hence

$$(43) \quad \text{Im } V_{\Theta_\Delta}(x + iy) = \frac{2by(B^2 + x^2 + y^2)}{(B^2 - x^2 + y^2)^2 + 4x^2y^2}.$$

Since  $b > 0$ ,  $y > 0$ , and the denominator is strictly positive, (43) is strictly positive. Therefore  $\text{Im } V_{\Theta_\Delta}(z) > 0$  for  $\text{Im } z > 0$ , and  $V_{\Theta_\Delta}$  is Herglotz-Nevanlinna. Finally, evaluating at  $z = z_1$  and  $z = z_2$  gives  $V_{\Theta_\Delta}(z_k) = i$ ,  $k = 1, 2$ .  $\square$

The explicit computation in Lemma 11 shows that a symmetric pair of interpolation nodes produces a rational Herglotz-Nevanlinna impedance function of the form  $Az/(B^2 - z^2)$ , which realizes the canonical interpolation L-system  $\Theta_\Delta$ . Adding further nodes perturbs this structure in a controlled way, as illustrated next.

**COROLLARY 6** (One symmetric pair plus one purely imaginary node). *Let the interpolation data consist of three nodes*

$$z_1 = a + ib, \quad z_2 = -a + ib, \quad z_3 = ic, \quad a \neq 0, b > 0, c > 0.$$

Let  $W_{\Theta_\Delta}(z)$  be the transfer function of the canonical interpolation L-system  $\Theta_\Delta$  of the form (17) for this data and  $V_{\Theta_\Delta}(z)$  its impedance function. Then  $V_{\Theta_\Delta}(z)$  has the two-term rational form

$$(44) \quad V_{\Theta_\Delta}(z) = -\frac{C}{z} + \frac{Az}{\widetilde{B}^2 - z^2},$$

where, with  $B^2 := a^2 + b^2$ ,

$$(45) \quad \widetilde{B}^2 = B^2 + 2bc, \quad C = \frac{cB^2}{\widetilde{B}^2}, \quad A = (2b + c) - C = (2b + c) - \frac{cB^2}{\widetilde{B}^2}.$$

In particular,

$$V_{\Theta_\Delta}(z_k) = i, \quad k = 1, 2, 3,$$

and  $V_{\Theta_\Delta}$  is Herglotz-Nevanlinna on  $\mathbb{C}_+$ .

**PROOF.** The transfer function is the product of the single-pair factor and the purely imaginary node factor:

$$W_{\Theta_\Delta}(z) = \underbrace{\frac{(z - \bar{z}_1)(z + z_1)}{(z - z_1)(z + \bar{z}_1)}}_{\text{symmetric pair}} \cdot \underbrace{\frac{z - \bar{z}_3}{z - z_3}}_{\text{imaginary node}} = \frac{(z - a + ib)(z + a + ib)}{(z - a - ib)(z + a - ib)} \cdot \frac{z + ic}{z - ic}.$$

Applying the Cayley transform (8) and simplifying gives

$$(46) \quad V_{\Theta_\Delta}(z) = i \frac{W_{\Theta_\Delta}(z) - 1}{W_{\Theta_\Delta}(z) + 1} = \frac{a^2c + b^2c - (2b + c)z^2}{z(z^2 - (a^2 + b^2 + 2bc))}.$$

Set  $B^2 := a^2 + b^2$  and  $\widetilde{B}^2 := B^2 + 2bc$ ; then (46) becomes

$$V_{\Theta_\Delta}(z) = \frac{cB^2 - (2b + c)z^2}{z(z^2 - \widetilde{B}^2)}.$$

We seek a decomposition of the form (44). Bringing the right-hand side over the common denominator  $z(\widetilde{B}^2 - z^2)$  gives

$$-\frac{C}{z} + A \frac{z}{\widetilde{B}^2 - z^2} = \frac{-C(\widetilde{B}^2 - z^2) + Az^2}{z(\widetilde{B}^2 - z^2)} = -\frac{cB^2 - (2b + c)z^2}{z(\widetilde{B}^2 - z^2)}.$$

Equating numerators yields

$$-(cB^2 - (2b + c)z^2) = -C\widetilde{B}^2 + (C + A)z^2.$$

Matching constant and  $z^2$  coefficients gives

$$C\tilde{B}^2 = cB^2 \implies C = \frac{cB^2}{\tilde{B}^2}, \quad C + A = 2b + c \implies A = (2b + c) - C,$$

which proves (44)-(45).

For the Herglotz-Nevalinna property, note  $0 < C < c$  since  $\tilde{B}^2 > B^2$ , and thus  $A = (2b + c) - C > 2b > 0$ . For  $z = x + iy$  with  $y > 0$ ,

$$\operatorname{Im}\left(-\frac{C}{z}\right) = \frac{Cy}{x^2 + y^2} > 0, \quad \operatorname{Im}\left(A \frac{z}{\tilde{B}^2 - z^2}\right) = A \frac{y(\tilde{B}^2 + x^2 + y^2)}{(\tilde{B}^2 - x^2 + y^2)^2 + 4x^2y^2} > 0,$$

hence  $\operatorname{Im}V_{\Theta_\Delta}(z) > 0$  on  $\mathbb{C}_+$ . Evaluating at  $z = z_1, z_2, ic$  gives  $V_{\Theta_\Delta}(z_k) = i$ .  $\square$

The preceding results, Lemma 11 and Corollary 6, reveal a consistent analytic structure. Each symmetric pair of interpolation nodes contributes a rational Herglotz-Nevalinna component of the form  $A_k z / (B_k^2 - z^2)$ , while purely imaginary nodes introduce additional terms of type  $-A_0/z$ . When several symmetric pairs are present, their individual contributions combine additively in the model construction by additive superposition of the pair contributions. These observations motivate the introduction of a single analytic function that captures the overall resonant-capacitive composition of the data. This function, denoted by  $V_\Delta(z)$ , does not necessarily interpolate the prescribed values  $i$  at all nodes for  $n > 1$ , but it reproduces the essential analytic and geometric structure of the corresponding interpolation system and provides a convenient model for the study of symmetric configurations.

**DEFINITION 7 (Model impedance function).** Let the interpolation data consist of  $n$  symmetric pairs  $(a_k \pm ib_k)$  with  $a_k \neq 0, b_k > 0$ , and  $m$  purely imaginary nodes  $ib_j$  with  $b_j > 0$ . The associated *model impedance function* is defined by

$$(47) \quad V_\Delta(z) = -\frac{A_0}{z} + \sum_{k=1}^n A_k \frac{z}{B_k^2 - z^2}, \quad A_0 = \sum_{j=1}^m b_j, \quad A_k = 2b_k, \quad B_k = \sqrt{a_k^2 + b_k^2}.$$

Here, the first term represents the collective capacitive contribution of all purely imaginary nodes, while each summand in the series corresponds to one symmetric resonant branch of the interpolation L-system.

The function  $V_\Delta(z)$  introduced in Definition 7 provides an analytic model for symmetric interpolation configurations. Although it does not, in general, realize the interpolation conditions  $V_\Delta(z_k) = i$  for all nodes, it retains the essential analytic structure determined by the symmetric placement of the data. In particular, each pair  $(z_k, -\bar{z}_k)$  contributes a term of the form  $A_k z / (B_k^2 - z^2)$ , and the total model impedance is obtained by additive coupling of these components. The following theorem gives the explicit formula for  $V_\Delta(z)$  and clarifies its relation to the transfer function of the canonical interpolation L-system  $\Theta_\Delta$ .

**THEOREM 12 (Symmetric Pairs of Interpolation Nodes).** *Let the interpolation data consist of  $2n$  symmetric nodes in  $\mathbb{C}_+$  satisfying*

$$z_k = a_k + ib_k, \quad z_{2n+1-k} = -a_k + ib_k, \quad a_k \in \mathbb{R}, \quad b_k > 0, \quad a_k \neq 0.$$

Then the model impedance function  $V_\Delta(z)$  is given by

$$(48) \quad V_\Delta(z) = \sum_{k=1}^n A_k \frac{z}{B_k^2 - z^2},$$

where

$$(49) \quad A_k = 2b_k, \quad B_k = \sqrt{a_k^2 + b_k^2} > 0.$$

Each term in (48) is a rational Herglotz–Nevanlinna component associated with one symmetric pair of interpolation nodes.

PROOF. For each symmetric pair  $(z_k, -\bar{z}_k)$  with  $z_k = a_k + ib_k$  and  $b_k > 0$ , the transfer factor is (see Lemma 11 and (42))

$$W_k(z) = \frac{(z - \bar{z}_k)(z + z_k)}{(z - z_k)(z + \bar{z}_k)}.$$

Applying the Cayley transform (8) to  $W_k$  gives the Herglotz–Nevanlinna component

$$V_k(z) = i \frac{W_k(z) - 1}{W_k(z) + 1} = \frac{2b_k z}{a_k^2 + b_k^2 - z^2} = A_k \frac{z}{B_k^2 - z^2},$$

with  $A_k = 2b_k$  and  $B_k = \sqrt{a_k^2 + b_k^2}$ . By Definition 7 (with no purely imaginary nodes), the model impedance for  $n$  symmetric pairs is the sum of these components:

$$V_\Delta(z) = \sum_{k=1}^n V_k(z) = \sum_{k=1}^n A_k \frac{z}{B_k^2 - z^2},$$

which is precisely the formula (48). Each  $V_k$  belongs to the Herglotz–Nevanlinna class and satisfies  $V_k(z_k) = i$  at its interpolation nodes. Hence  $V_\Delta(z)$ , being their sum, also belongs to the Herglotz–Nevanlinna class.  $\square$

The corresponding transfer function of the canonical interpolation L-system  $\Theta_\Delta$  is

$$(50) \quad W_{\Theta_\Delta}(z) = \prod_{k=1}^n \frac{(z - \bar{z}_k)(z + z_k)}{(z - z_k)(z + \bar{z}_k)}.$$

This product representation contrasts with the additive structure of the model impedance function (48). The following remark clarifies the analytic relationship between the two and explains how the model form  $V_\Delta(z)$  relates to the canonical pair  $(V_{\Theta_\Delta}(z), W_{\Theta_\Delta}(z))$ .

REMARK 13 (Cayley structure of the model function). *The impedance function  $V_{\Theta_\Delta}(z)$  and the transfer function  $W_{\Theta_\Delta}(z)$  of the canonical interpolation L-system are linked by the Cayley transform (8). In contrast, the model impedance function  $V_\Delta(z)$  of Theorem 12 possesses an additive representation that is not obtained by applying this transform directly to the product form (50). Instead,  $V_\Delta(z)$  serves as a simplified analytic realization built by additive coupling of the individual symmetric-pair components  $V_k(z) = \frac{2b_k z}{B_k^2 - z^2}$ . It reproduces the global resonant-capacitive structure of the interpolation data, although for  $n > 1$  it does not, in general, realize the exact Nevanlinna–Pick values  $V_\Delta(z_k) = i$  satisfied by  $V_{\Theta_\Delta}(z)$ .*

The next step is to extend this construction to configurations that include purely imaginary interpolation nodes not paired by symmetry. Such nodes represent the limiting case of vanishing real parts in the symmetric setting and contribute additional terms of capacitive type to the model impedance function. The following theorem provides the explicit analytic form of  $V_\Delta(z)$  in this degenerate situation.

**THEOREM 14** (Purely Imaginary Interpolation Nodes). *Suppose the interpolation data contain  $m$  purely imaginary nodes*

$$z_j = i b_j, \quad b_j > 0,$$

*without symmetric counterparts. Then the associated model impedance function  $V_0(z)$ , which is Herglotz–Nevanlinna and satisfies  $V_0(z_j) = i$ , has the form*

$$(51) \quad V_0(z) = - \sum_{j=1}^m \frac{A_{0j}}{z}, \quad A_{0j} = b_j.$$

*Each term in (51) represents the degenerate limit of a symmetric pair with vanishing real part  $a_k \rightarrow 0$ , a term of purely capacitive type in the sense of the subsequent physical interpretation (see Remark 15).*

**PROOF.** For a single purely imaginary node  $z_j = i b_j$  with  $b_j > 0$ , the corresponding transfer function of the canonical interpolation L-system is

$$W_j(z) = \frac{z - \bar{z}_j}{z - z_j} = \frac{z + i b_j}{z - i b_j}.$$

Applying the Cayley transform (8) gives

$$V_j(z) = i \frac{W_j(z) - 1}{W_j(z) + 1} = - \frac{b_j}{z}.$$

Summing over all  $m$  purely imaginary nodes yields

$$V_0(z) = - \sum_{j=1}^m \frac{b_j}{z},$$

which coincides with (51). Each term  $-b_j/z$  represents the degenerate limit of the symmetric-pair expression  $A_k z / (B_k^2 - z^2)$  as the real part  $a_k \rightarrow 0$ , a term of purely capacitive type in the sense of the subsequent physical interpretation (see Remark 15).  $\square$

Combining the results of Theorem 12 and Theorem 14 yields the general analytic form of the model impedance function for symmetric interpolation configurations that may include both symmetric pairs and purely imaginary nodes. The resulting expression unifies the resonant and capacitive components into a single rational Herglotz–Nevanlinna function, as stated below.

**COROLLARY 8** (General Symmetric Configuration). *Let the interpolation data consist of  $n$  symmetric pairs  $(a_k \pm i b_k)$  with  $a_k \neq 0$ ,  $b_k > 0$ , and  $m$  purely imaginary nodes  $i b_j$  with  $b_j > 0$ . Then the combined model impedance function is*

$$(52) \quad V_\Delta(z) = - \frac{A_0}{z} + \sum_{k=1}^n A_k \frac{z}{B_k^2 - z^2},$$

where

$$A_0 = \sum_{j=1}^m b_j, \quad A_k = 2b_k, \quad B_k = \sqrt{a_k^2 + b_k^2} > 0.$$

The first term in (52) represents the collective contribution of all purely imaginary nodes, while each summand in the series corresponds to one symmetric resonant branch of the model impedance function. Together these terms form a rational Herglotz–Nevanlinna function that encodes the resonant–capacitive structure of the interpolation data. (The canonical impedance  $V_{\Theta_\Delta}(z)$  obtained via (8) satisfies  $V_{\Theta_\Delta}(z_k) = i$  for all nodes.)

PROOF. The expression (52) follows directly by superposition of the symmetric-pair representation established in Theorem 12 and the purely imaginary contribution described in Theorem 14.  $\square$

Theorems 12–14, together with Corollary 8, provide a complete analytic description of symmetric interpolation systems, encompassing both resonant (symmetric-pair) and purely reactive (imaginary-node) configurations. Beyond their analytic meaning, these results also admit a direct *physical interpretation* in terms of classical network synthesis, where each term in (52) corresponds to a distinct component of a passive  $LC$  circuit. The following remark makes this correspondence explicit and explains how the interpolation data determine the energy storage and exchange properties of the associated system.

REMARK 15 (Physical interpretation). *The model impedance function  $V_\Delta(z)$  introduced in Corollary 8,*

$$V_\Delta(z) = -\frac{A_0}{z} + \sum_{k=1}^n A_k \frac{z}{B_k^2 - z^2},$$

*admits a direct interpretation within the framework of classical network synthesis, where the analytic terms correspond to the capacitive and resonant elements of a passive electrical circuit. To make this correspondence explicit, it is convenient to rewrite  $V_\Delta(z)$  in the real-frequency variable  $p = -iz$ , so that*

$$Z(p) = \frac{1}{i} V_\Delta(ip) = \frac{A_0}{p} + \sum_{k=1}^n A_k \frac{p}{B_k^2 + p^2},$$

*a rational positive-real function analytic in the right half-plane  $\Re p > 0$  and real on the positive real axis (see Remark 1 of [5]). Consequently,  $Z(p)$  represents the impedance of a passive one-port electrical network consisting of a capacitor  $C_0 = 1/A_0$  in series with  $n$  parallel  $LC$  branches whose inductances and capacitances are given by*

$$L_k = \frac{A_k}{B_k^2}, \quad C_k = \frac{1}{A_k}, \quad k = 1, \dots, n.$$

*Each branch represents one symmetric pair of interpolation nodes  $(z_k, -\bar{z}_k)$  with parameters  $A_k = 2b_k$  and  $B_k = \sqrt{a_k^2 + b_k^2}$  (see (49)), while the term  $A_0/z$  arises from the collection of purely imaginary nodes  $z_j = ib_j$ .*

*The symmetry of the interpolation data ensures reciprocity and lossless energy exchange between the inductive and capacitive components, whereas any deviation from symmetry ( $a_k \neq 0$ ) introduces controlled dissipation quantified by the  $c$ -entropy and dissipation coefficient. Hence, each interpolation pair contributes a resonant*

*LC channel whose strength and resonance frequency are determined by  $A_k$  and  $B_k$ , respectively. The analytic model  $V_\Delta(z)$  thus provides a direct bridge between the geometry of the interpolation data and the physical theory of passive positive-real networks, linking the operator-theoretic structure of the interpolation L-system  $\Theta_\Delta$  with the classical LC-network synthesis framework (see, e.g., [10]).*

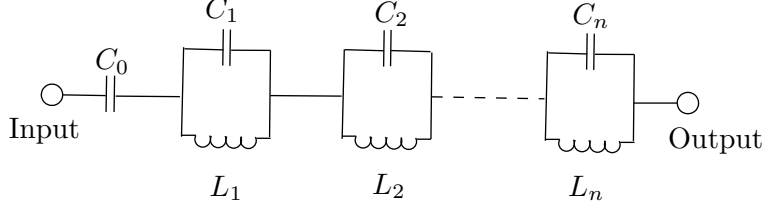


FIGURE 1. Equivalent electrical network corresponding to the impedance function  $Z(p) = \frac{A_0}{p} + \sum_{k=1}^n A_k \frac{p}{B_k^2 + p^2}$ .

The correspondence between the analytic impedance function  $V_\Delta(z)$  and its physical network realization is illustrated schematically in Figure 1. Each pair of symmetric interpolation nodes  $\{z_k, -\bar{z}_k\}$  gives rise to one resonant LC branch of the circuit. The network consists of  $n$  parallel LC branches having inductances  $L_k = A_k/B_k^2$  and capacitances  $C_k = 1/A_k$  for  $k = 1, \dots, n$ . Each branch corresponds to a symmetric pair  $(z_k, -\bar{z}_k)$  with parameters  $A_k = 2b_k$  and  $B_k^2 = a_k^2 + b_k^2$ , which determine the branch strength and resonance frequency. In addition, the single capacitor  $C_0 = 1/A_0$  shown in Figure 1 represents the collective contribution of all purely imaginary nodes, providing the baseline capacitive channel responsible for static energy storage and overall charge balance in the system. Together these elements form the complete passive one-port network associated with the model impedance function  $V_\Delta(z)$ .

The representation (47) and its network realization shown in Figure 1 illustrate how the analytic geometry of the interpolation nodes governs the energy distribution within the corresponding L-system. Each symmetric pair  $(z_k, -\bar{z}_k)$  defines a resonant channel of reversible energy exchange, while the purely imaginary nodes produce the static component responsible for baseline capacitive storage. Together these elements form a balanced structure whose entropy and dissipation characteristics are determined entirely by the placement of the interpolation data. This correspondence establishes a direct bridge between the analytic geometry of symmetric interpolation configurations and the physical mechanisms of energy flow in the associated L-system.

**Examples.** To conclude this section, we illustrate the analytic and physical structures developed above by evaluating the model impedance function for concrete interpolation data. The first example treats the simplest nontrivial symmetric configuration, while the second adds a purely imaginary node to the same symmetric pair, demonstrating the combined resonant-capacitive character of the resulting system and its influence on the associated entropy and dissipation invariants.

EXAMPLE 9 (Symmetric case: finite c-entropy). Consider the symmetric interpolation data consisting of two nodes

$$z_1 = 1 + 2i, \quad z_2 = -1 + 2i,$$

so that  $a_1 = 1$  and  $b_1 = 2$ . According to Lemma 11, the corresponding parameters of the impedance function are

$$A = 2b = 4, \quad B = \sqrt{a^2 + b^2} = \sqrt{5}.$$

Hence, the impedance function of the interpolation L-system  $\Theta_\Delta$  is

$$(53) \quad V_{\Theta_\Delta}(z) = \frac{4z}{5 - z^2}.$$

A quick check shows that  $V_{\Theta_\Delta}(\pm 1 + 2i) = i$ , confirming the interpolation property. Moreover, for  $z = x + iy$  with  $y > 0$ , the imaginary part is

$$\operatorname{Im} V_{\Theta_\Delta}(z) = \frac{4y(5 + x^2 + y^2)}{(5 - x^2 - y^2)^2 + 4x^2y^2} > 0,$$

so that  $V_{\Theta_\Delta}(z)$  is indeed a Herglotz-Nevanlinna function. Evaluating at  $z = i$  gives  $V_{\Theta_\Delta}(i) = \frac{2}{3}i$ , placing  $V_{\Theta_\Delta}(z)$  in the bounded Donoghue class  $\widehat{\mathfrak{M}}_\kappa$  with  $\kappa = \frac{1}{5}$  (see [5, Section 3]).

The corresponding transfer function, obtained via the Cayley transform, is

$$W_{\Theta_\Delta}(z) = \frac{1 - iV_{\Theta_\Delta}(z)}{1 + iV_{\Theta_\Delta}(z)} = \frac{3 - z^2 - 4iz}{3 - z^2 + 4iz},$$

which coincides with the product representation

$$W_{\Theta_\Delta}(z) = \frac{(z - \bar{z}_1)(z + z_1)}{(z - z_1)(z + \bar{z}_1)} = \frac{(z - 1 + 2i)(z + 1 + 2i)}{(z - 1 - 2i)(z + 1 - 2i)}.$$

This confirms perfect agreement with the general formula (18).

Finally, the c-entropy and dissipation coefficient computed from (53) via formulas (10) yield

$$\mathcal{S} = \ln 5 \approx 1.6094, \quad \mathcal{D} = 1 - e^{-2\mathcal{S}} = \frac{24}{25} = 0.96,$$

demonstrating that the symmetric pair of nodes produces an interpolation L-system of finite c-entropy corresponding to the bounded Donoghue class  $\widehat{\mathfrak{M}}_{\frac{1}{5}}$ .

EXAMPLE 10 (Mixed configuration: symmetric pair plus one purely imaginary node). Consider the interpolation data

$$z_1 = 1 + 2i, \quad z_2 = -1 + 2i, \quad z_3 = 3i.$$

By Corollary 6 (with  $a = 1$ ,  $b = 2$ ,  $c = 3$ ), we have

$$B^2 = a^2 + b^2 = 5, \quad \widetilde{B}^2 = B^2 + 2bc = 17, \quad C = \frac{cB^2}{\widetilde{B}^2} = \frac{15}{17}, \quad A = (2b + c) - C = \frac{104}{17},$$

and hence the (canonical) impedance function is

$$V_{\Theta_\Delta}(z) = -\frac{C}{z} + A \frac{z}{\widetilde{B}^2 - z^2} = -\frac{15}{17} \frac{1}{z} + \frac{104}{17} \frac{z}{17 - z^2}.$$

A direct substitution shows that

$$V_{\Theta_\Delta}(1 + 2i) = V_{\Theta_\Delta}(-1 + 2i) = V_{\Theta_\Delta}(3i) = i,$$

confirming the interpolation property.

The transfer function obtained via the Cayley transform is

$$W_{\Theta_{\Delta}}(z) = \frac{1 - iV_{\Theta_{\Delta}}(z)}{1 + iV_{\Theta_{\Delta}}(z)}.$$

Evaluating at  $z = -i$  yields

$$V_{\Theta_{\Delta}}(-i) = -\frac{11}{9}i, \quad W_{\Theta_{\Delta}}(-i) = -\frac{1}{10}, \quad |W_{\Theta_{\Delta}}(-i)| = \frac{1}{10}.$$

Therefore the c-entropy and dissipation coefficient are

$$\mathcal{S} = -\ln|W_{\Theta_{\Delta}}(-i)| = \ln 10 \approx 2.3026, \quad \mathcal{D} = 1 - e^{-2\mathcal{S}} = 1 - 10^{-2} = 0.99.$$

Compared with the purely symmetric case of Example 9 (where  $\mathcal{S} = \ln 5$  and  $\mathcal{D} = 24/25$ ), the additional purely imaginary node increases both the c-entropy and the dissipation.

Having established the analytic and physical structure of symmetric interpolation systems, we now turn to the explicit *operator realization* of the model  $\Theta_{\Delta}$ , where these abstract constructions are implemented concretely in terms of state-space operators and their spectral properties.

## 8. Operator Realization of the Model $\Theta_{\Delta}$

The interpolation model  $\Theta_{\Delta}$  occupies a central position in our analysis, serving as the bridge between the analytic characterization of interpolation data and the operator-theoretic realization of their dissipative structure.

Building on the classification of entropy regimes obtained in Section 6, we now turn to the operator model  $\Theta_{\Delta}$  introduced in Section 3 and examine its concrete realization and invariant properties. Below we present a complete worked example that connects all main constructions introduced in Sections 3-5.

Consider the interpolation data

$$z_1 = 2i, \quad z_2 = 3i, \quad v_1 = v_2 = i,$$

and explicitly build the corresponding Pick-form interpolation system  $\vec{\Theta}$ , the canonical model  $\Theta_{\Delta}$ , and the coupled one-dimensional multiplication model  $\Theta = \Theta_1 \cdot \Theta_2$ . We then compute their transfer functions, verify that they coincide, and evaluate the c-entropy and dissipation coefficients to confirm the additivity and invariance properties established earlier.

**8.1. Setup of the interpolation data.** The Nevanlinna-Pick data  $(z_k, v_k) \in \mathbb{C}_+ \times \mathbb{C}_+$  for  $k = 1, 2$  determine the Pick matrices from (12)

$$\mathbb{P}_{j,k} = \frac{v_k - \bar{v}_j}{z_k - \bar{z}_j}, \quad \mathbb{Q}_{j,k} = \frac{z_k v_k - \bar{z}_j \bar{v}_j}{z_k - \bar{z}_j},$$

which are strictly positive in this example. All subsequent constructions will use these matrices to generate self-adjoint, dissipative, and coupled system realizations.

**8.2. Pick-form interpolation system  $\vec{\Theta}$ .** We begin with the construction of the interpolation L-system  $\vec{\Theta}$  in the Pick form, directly corresponding to the given interpolation data  $(z_k, v_k)$ . This realization serves as the analytic starting point for comparing transfer and impedance characteristics across the different system representations considered below. For  $z_1 = 2i$ ,  $z_2 = 3i$  and  $v_1 = v_2 = i$  (so  $\bar{v}_1 = \bar{v}_2 = -i$ ), the denominators are

$$z_1 - \bar{z}_1 = 4i, \quad z_2 - \bar{z}_2 = 6i, \quad z_1 - \bar{z}_2 = 5i, \quad z_2 - \bar{z}_1 = 5i,$$

and  $v_k - \bar{v}_j = 2i$  for all  $j, k$ . Hence

$$\mathbb{P} = \begin{pmatrix} \frac{2i}{4i} & \frac{2i}{5i} \\ \frac{2i}{5i} & \frac{2i}{6i} \end{pmatrix} = \begin{pmatrix} \frac{1}{2} & \frac{2}{5} \\ \frac{2}{5} & \frac{1}{3} \end{pmatrix}, \quad \det \mathbb{P} = \frac{1}{150} > 0.$$

For  $\mathbb{Q}$ , note  $z_k v_k = -\operatorname{Im} z_k$  and  $\bar{z}_j \bar{v}_j = -\operatorname{Im} z_j$ , so the numerators are  $\operatorname{Im} z_j - \operatorname{Im} z_k$ . Thus

$$\mathbb{Q} = \begin{pmatrix} 0 & \frac{2-3}{5i} \\ \frac{3-2}{5i} & 0 \end{pmatrix} = \begin{pmatrix} 0 & \frac{i}{5} \\ -\frac{i}{5} & 0 \end{pmatrix}.$$

Let us find the state space and inner product. We work in  $\mathbb{C}^2$  with the weighted inner product  $(\xi, \eta)_{\mathbb{C}_{\mathbb{P}}^2} = \eta^* \mathbb{P} \xi$ . Let

$$\vec{A} = \mathbb{P}^{-1} \mathbb{Q}, \quad \varphi = \begin{pmatrix} v_1 \\ v_2 \end{pmatrix} = \begin{pmatrix} i \\ i \end{pmatrix}, \quad \vec{g} = \mathbb{P}^{-1} \varphi.$$

Since  $\mathbb{P}^{-1} = \begin{pmatrix} 50 & -60 \\ -60 & 75 \end{pmatrix}$ , we get

$$\vec{g} = \begin{pmatrix} 50 & -60 \\ -60 & 75 \end{pmatrix} \begin{pmatrix} i \\ i \end{pmatrix} = \begin{pmatrix} -10i \\ 15i \end{pmatrix}, \quad \vec{A} = \mathbb{P}^{-1} \mathbb{Q} = \begin{pmatrix} 12i & 10i \\ -15i & -12i \end{pmatrix}.$$

One readily checks  $\vec{A}$  is self-adjoint with respect to  $(\cdot, \cdot)_{\mathbb{C}_{\mathbb{P}}^2}$  since  $\mathbb{Q} = \mathbb{Q}^*$ .

Define

$$\vec{T} = \vec{A} + i(\cdot, \vec{g})_{\mathbb{C}_{\mathbb{P}}^2} \vec{g} = \vec{A} + i \vec{g} (\vec{g}^* \mathbb{P}), \quad \vec{K}c = c \vec{g}, \quad c \in \mathbb{C}.$$

Because  $\vec{g}^* \mathbb{P} = [-i \quad -i]$ , the rank-one part is

$$i \vec{g} (\vec{g}^* \mathbb{P}) = i \begin{pmatrix} -10i \\ 15i \end{pmatrix} [-i \quad -i] = \begin{pmatrix} -10i & -10i \\ 15i & 15i \end{pmatrix}.$$

Therefore

$$\vec{T} = \begin{pmatrix} 12i & 10i \\ -15i & -12i \end{pmatrix} + \begin{pmatrix} -10i & -10i \\ 15i & 15i \end{pmatrix} = \begin{pmatrix} 2i & 0 \\ 0 & 3i \end{pmatrix}.$$

Thus

$$\vec{T} = \begin{pmatrix} 2i & 0 \\ 0 & 3i \end{pmatrix}.$$

By construction,

$$\vec{T} = \vec{A} + i(\cdot, \vec{g})_{\mathbb{C}_{\mathbb{P}}^2} \vec{g},$$

so that  $\operatorname{Re} \vec{T} = \vec{A}$  and  $\operatorname{Im} \vec{T} = \vec{K} \vec{K}^*$  in the Hilbert space  $\mathbb{C}_{\mathbb{P}}^2$ . In particular,  $\vec{T}$  is dissipative.

We have constructed the interpolation system  $\vec{\Theta}$  that is the Livšic canonical scattering system in the Pick form

$$\vec{\Theta} = \begin{pmatrix} \vec{T} & \vec{K} & 1 \\ \mathbb{C}_{\mathbb{P}}^2 & \mathbb{C} & \mathbb{C} \end{pmatrix} \quad \text{with} \quad \vec{T} = \begin{pmatrix} 2i & 0 \\ 0 & 3i \end{pmatrix}, \quad \vec{K}c = c \begin{pmatrix} 10i \\ -15i \end{pmatrix}.$$

As in (14), the impedance function is

$$V_{\vec{\Theta}}(z) = \vec{K}^*(\vec{A} - zI)^{-1}\vec{K} = (\cdot, \vec{g})_{\mathbb{C}_{\mathbb{P}}^2}((\vec{A} - zI)^{-1}\vec{g}).$$

From  $(\vec{A} - z_k I)e_k = \vec{g}$  (which holds here for  $k = 1, 2$ ), we obtain

$$V_{\vec{\Theta}}(z_k) = (e_k, \vec{g})_{\mathbb{C}_{\mathbb{P}}^2} = \vec{g}^* \mathbb{P} e_k = i, \quad k = 1, 2.$$

Thus  $\vec{\Theta}$  solves the Nevanlinna-Pick interpolation problem for the data  $(z_1, z_2) = (2i, 3i)$  and  $(v_1, v_2) = (i, i)$ . The transfer function is the Blaschke product

$$W_{\vec{\Theta}}(z) = \prod_{k=1}^2 \frac{z - \bar{z}_k}{z - z_k} = \frac{z + 2i}{z - 2i} \cdot \frac{z + 3i}{z - 3i},$$

and the corresponding impedance function equals  $V_{\vec{\Theta}}(z) = i \frac{W_{\vec{\Theta}}(z) - 1}{W_{\vec{\Theta}}(z) + 1}$ , with  $V_{\vec{\Theta}}(2i) = V_{\vec{\Theta}}(3i) = i$ .

**8.3. Canonical model system  $\Theta_{\Delta}$ .** Next, we construct the canonical model system  $\Theta_{\Delta}$  associated with the same interpolation data. This model provides a concrete operator realization that is unitarily equivalent to  $\vec{\Theta}$ , sharing the same transfer function while offering a more transparent matrix representation of its internal structure.

For the model L-system  $\Delta$  in Section 3 (see (16)-(17)), with  $m = 2$  and  $z_1 = 2i$  (so  $\text{Im } z_1 = 2$ ),  $z_2 = 3i$  (so  $\text{Im } z_2 = 3$ ), we have

$$T_{\Delta} = \begin{pmatrix} z_1 & 2i\sqrt{\text{Im } z_1}\sqrt{\text{Im } z_2} \\ 0 & z_2 \end{pmatrix} = \begin{pmatrix} 2i & 2i\sqrt{2}\sqrt{3} \\ 0 & 3i \end{pmatrix} = \begin{pmatrix} 2i & 2\sqrt{6}i \\ 0 & 3i \end{pmatrix},$$

and

$$g_{\Delta} = \begin{pmatrix} \sqrt{\text{Im } z_1} \\ \sqrt{\text{Im } z_2} \end{pmatrix} = \begin{pmatrix} \sqrt{2} \\ \sqrt{3} \end{pmatrix}.$$

Define  $K_{\Delta}(c) = c g_{\Delta}$ . Then  $\text{Im } T_{\Delta} = (\cdot, g_{\Delta}) g_{\Delta}$  and

$$\Theta_{\Delta} = \begin{pmatrix} T_{\Delta} & K_{\Delta} & 1 \\ \mathbb{C}^2 & \mathbb{C} & \mathbb{C} \end{pmatrix}$$

is the Livšic scattering system in the model (Pick) form.

Let's find the transfer function  $W_{\Theta_{\Delta}}(z)$ . By the general formula in Section 3 (see (18)),

$$W_{\Theta_{\Delta}}(z) = 1 - 2i((T_{\Delta} - zI)^{-1}g_{\Delta}, g_{\Delta}) = \prod_{k=1}^2 \frac{z - \bar{z}_k}{z - z_k} = \frac{z + 2i}{z - 2i} \cdot \frac{z + 3i}{z - 3i}.$$

Comparing with subsection 8.2, we found for the Pick-form realization  $\vec{\Theta}$  that

$$W_{\vec{\Theta}}(z) = \frac{z + 2i}{z - 2i} \cdot \frac{z + 3i}{z - 3i}.$$

Hence, as expected,

$$W_{\Theta_\Delta}(z) \equiv W_{\vec{\Theta}}(z),$$

so the model system  $\Theta_\Delta$  and the Pick-form realization  $\vec{\Theta}$  have the same transfer function (and therefore the same impedance function  $V = i\frac{W-1}{W+1}$ , with  $V(2i) = V(3i) = i$ ). Since both realizations are minimal (see Section 3) and have identical transfer functions, the canonical model and the Pick-form realization are unitarily equivalent.

**8.4. Coupled multiplication-operator system  $\Theta$ .** Finally, we consider two one-dimensional multiplication-operator L-systems  $\Theta_1$  and  $\Theta_2$ . By Lemma 2, their coupling  $\Theta = \Theta_1 \cdot \Theta_2$  is minimal. Since it has the same transfer function as  $\Theta_\Delta$ , the two systems are unitarily equivalent.

This construction illustrates how the abstract coupling framework reproduces the same transfer behavior as the interpolation and model systems, thereby confirming the invariance of the associated c-entropy and dissipation coefficient.

We work on the one-dimensional state space  $\mathcal{H} = \mathbb{C}$  with the normalized basis vector  $h_0 = 1$ . For a multiplication-operator L-system with parameter  $\lambda_0 \in \mathbb{C}_+$  we take

$$Th = \lambda_0 h, \quad Kc = (\sqrt{\operatorname{Im} \lambda_0} c) h_0 = \sqrt{\operatorname{Im} \lambda_0} c, \quad c \in \mathbb{C}.$$

Then  $K^*h = (h, \sqrt{\operatorname{Im} \lambda_0}) = \sqrt{\operatorname{Im} \lambda_0} h$ , so that  $KK^* = (\operatorname{Im} \lambda_0)I$  and  $\operatorname{Im} T = (\operatorname{Im} \lambda_0)I = KK^*$ .

Based on our data set we construct two one-dimensional multiplication L-systems. For  $z_1 = 2i$  and  $z_2 = 3i$  we set

$$\begin{aligned} \Theta_1 &= \begin{pmatrix} T_1 & K_1 & 1 \\ \mathbb{C} & & \mathbb{C} \end{pmatrix}, \quad T_1(h) = 2i h, \quad K_1 c = \sqrt{2} c, \\ \Theta_2 &= \begin{pmatrix} T_2 & K_2 & 1 \\ \mathbb{C} & & \mathbb{C} \end{pmatrix}, \quad T_2(h) = 3i h, \quad K_2 c = \sqrt{3} c. \end{aligned}$$

Their transfer functions (cf. Section 4, (23)) are

$$W_{\Theta_1}(z) = \frac{\bar{2}i - z}{2i - z} = \frac{z + 2i}{z - 2i}, \quad W_{\Theta_2}(z) = \frac{\bar{3}i - z}{3i - z} = \frac{z + 3i}{z - 3i}.$$

Following Section 4 (see (26)-(27)), the *coupled* system  $\Theta = \Theta_1 \cdot \Theta_2$  acts on  $\mathcal{H} \oplus \mathcal{H} = \mathbb{C}^2$  and is defined by

$$\Theta = \begin{pmatrix} \mathbf{T} & \mathbf{K} & 1 \\ \mathbb{C}^2 & & \mathbb{C} \end{pmatrix}, \quad \mathbf{T} = \begin{pmatrix} T_1 & 2iK_1K_2^* \\ 0 & T_2 \end{pmatrix}, \quad \mathbf{K} = \begin{pmatrix} K_1 \\ K_2 \end{pmatrix}.$$

Since  $K_1K_2^*$  is multiplication by  $\sqrt{2}\sqrt{3} = \sqrt{6}$  on  $\mathbb{C}$ , we get

$$\mathbf{T} = \begin{pmatrix} 2i & 2i\sqrt{6} \\ 0 & 3i \end{pmatrix}, \quad \mathbf{K}c = \begin{pmatrix} \sqrt{2} \\ \sqrt{3} \end{pmatrix} c, \quad c \in \mathbb{C}.$$

A direct computation gives

$$\operatorname{Im} \mathbf{T} = \frac{1}{2i}(\mathbf{T} - \mathbf{T}^*) = \begin{pmatrix} 2 & 0 \\ 0 & 3 \end{pmatrix} = \mathbf{K} \mathbf{K}^*,$$

so  $\Theta$  is again a canonical dissipative L-system.

By multiplicativity of transfer functions for the coupling (Section 4),

$$W_\Theta(z) = W_{\Theta_1}(z) W_{\Theta_2}(z) = \frac{z + 2i}{z - 2i} \cdot \frac{z + 3i}{z - 3i}.$$

This matches exactly the transfer function obtained in Step 1 for the Pick-form realization  $\vec{\Theta}$  and in Step 2 for the model system  $\Theta_\Delta$ :

$$W_\Theta(z) \equiv W_{\vec{\Theta}}(z) \equiv W_{\Theta_\Delta}(z) = \frac{z+2i}{z-2i} \cdot \frac{z+3i}{z-3i}.$$

Consequently, all three realizations are (unitarily) equivalent at the level of transfer data, and thus have the same impedance function  $V(z) = i \frac{W(z)-1}{W(z)+1}$  and the same invariants  $c$ -entropy and dissipation coefficient.

**8.5.  $c$ -Entropy and dissipation coefficients.** Having established the three equivalent realizations—the interpolation system  $\vec{\Theta}$ , the model system  $\Theta_\Delta$ , and the coupled system  $\Theta = \Theta_1 \cdot \Theta_2$ —we now turn to the computation of their intrinsic quantitative invariants. Specifically, we evaluate the  $c$ -entropy  $\mathcal{S}$  and the dissipation coefficient  $\mathcal{D}$  for each realization and verify the additivity and composition laws derived earlier. The results confirm that these quantities are invariant under unitary equivalence and depend solely on the geometric placement of the interpolation nodes, thus providing a concrete illustration of the intrinsic nature of entropy and dissipation in the theory of L-systems.

We collect the invariants for:

$$\Theta_1 \ (\lambda_0 = 2i), \quad \Theta_2 \ (\lambda_0 = 3i), \quad \Theta = \Theta_1 \cdot \Theta_2, \quad \vec{\Theta}, \quad \Theta_\Delta.$$

For a one-dimensional multiplication model (Section 4) the formulas are

$$\mathcal{S}(\lambda_0) = \frac{1}{2} \ln \frac{(\operatorname{Re} \lambda_0)^2 + (1 + \operatorname{Im} \lambda_0)^2}{(\operatorname{Re} \lambda_0)^2 + (1 - \operatorname{Im} \lambda_0)^2}, \quad \mathcal{D}(\lambda_0) = \frac{4 \operatorname{Im} \lambda_0}{(\operatorname{Re} \lambda_0)^2 + (1 + \operatorname{Im} \lambda_0)^2}.$$

With  $\lambda_0 = 2i$  and  $\mu_0 = 3i$  we obtain

$$\begin{aligned} \mathcal{S}_1 = \mathcal{S}(\Theta_1) &= \frac{1}{2} \ln \frac{(1+2)^2}{(1-2)^2} = \ln \left| \frac{1+2}{1-2} \right| = \ln 3, & \mathcal{D}_1 &= \frac{4 \cdot 2}{(1+2)^2} = \frac{8}{9}, \\ \mathcal{S}_2 = \mathcal{S}(\Theta_2) &= \frac{1}{2} \ln \frac{(1+3)^2}{(1-3)^2} = \ln \left| \frac{1+3}{1-3} \right| = \ln 2, & \mathcal{D}_2 &= \frac{4 \cdot 3}{(1+3)^2} = \frac{12}{16} = \frac{3}{4}. \end{aligned}$$

Additivity of  $c$ -entropy and the dissipation coupling law give

$$\mathcal{S}(\Theta) = \mathcal{S}_1 + \mathcal{S}_2 = \ln 3 + \ln 2 = \ln 6, \quad 1 - \mathcal{D}(\Theta) = (1 - \mathcal{D}_1)(1 - \mathcal{D}_2),$$

hence

$$\mathcal{D}(\Theta) = \mathcal{D}_1 + \mathcal{D}_2 - \mathcal{D}_1 \mathcal{D}_2 = \frac{8}{9} + \frac{3}{4} - \frac{8}{9} \cdot \frac{3}{4} = \frac{35}{36}.$$

For Pick-form L-system  $\vec{\Theta}$  and model system  $\Theta_\Delta$  from the above we have

$$W_{\vec{\Theta}}(z) \equiv W_{\Theta_\Delta}(z) \equiv W_\Theta(z) = \frac{z+2i}{z-2i} \cdot \frac{z+3i}{z-3i}.$$

Therefore all three realizations have the same invariants:

$$\begin{aligned} \mathcal{S}(\vec{\Theta}) &= \mathcal{S}(\Theta_\Delta) = \mathcal{S}(\Theta) = -\ln |W_\Theta(-i)| = -\ln \left| \frac{-i+2i}{-i-2i} \cdot \frac{-i+3i}{-i-3i} \right| \\ &= -\ln \left| \frac{i}{-3i} \cdot \frac{2i}{-4i} \right| = -\ln \left| \frac{1}{6} \right| = \ln 6, \end{aligned}$$

and, using  $1 - \mathcal{D} = \prod_k (1 - \mathcal{D}_k)$  (or directly from  $W$ ),

$$\mathcal{D}(\vec{\Theta}) = \mathcal{D}(\Theta_\Delta) = \mathcal{D}(\Theta) = \frac{35}{36}.$$

We can summarize all this data in Table 8.5.

**Numerical values.**

$$\mathcal{S}_1 = \ln 3 \approx 1.098612, \quad \mathcal{S}_2 = \ln 2 \approx 0.693147, \quad \mathcal{S}(\text{any of } \Theta, \vec{\Theta}, \Theta_\Delta) = \ln 6 \approx 1.791759,$$

$$\mathcal{D}_1 = \frac{8}{9} \approx 0.8888889, \quad \mathcal{D}_2 = \frac{3}{4} = 0.75, \quad \mathcal{D}(\text{any of } \Theta, \vec{\Theta}, \Theta_\Delta) = \frac{35}{36} \approx 0.9722222.$$

L-system	c-Entropy $\mathcal{S}$	Dissipation $\mathcal{D}$
$\Theta_1$ ( $2i$ )	$\ln 3$	$8/9$
$\Theta_2$ ( $3i$ )	$\ln 2$	$3/4$
Coupling $\Theta = \Theta_1 \cdot \Theta_2$	$\ln 6$	$35/36$
Pick-form system $\vec{\Theta}$	$\ln 6$	$35/36$
Model system $\Theta_\Delta$	$\ln 6$	$35/36$

TABLE 1. Invariants of all realizations for the two-node interpolation data.

Note that all constructions yield the same transfer function

$$W(z) = \frac{z + 2i}{z - 2i} \cdot \frac{z + 3i}{z - 3i},$$

and consequently the same invariants. This confirms that both  $c$ -entropy and the dissipation coefficient are *intrinsic invariants* of the interpolation data. The example numerically verifies the additivity law  $\mathcal{S} = \mathcal{S}_1 + \mathcal{S}_2$  and the nonlinear coupling law  $\mathcal{D} = \mathcal{D}_1 + \mathcal{D}_2 - \mathcal{D}_1 \mathcal{D}_2$ , demonstrating consistency between the Pick-form, canonical, and coupled formulations of L-systems.

In addition, we see that although  $\Theta_\Delta$  is not literally the coupling of the one-node models, it is unitarily equivalent to such a coupling, since both realizations are minimal and share the same transfer function. Since  $\mathcal{S}$  and  $\mathcal{D}$  are defined via  $|W(-i)|$  and are invariant under unitary equivalence, their values are *intrinsic* to the interpolation data. The additivity of  $\mathcal{S}$  and the nonlinear law  $\mathcal{D} = \mathcal{D}_1 + \mathcal{D}_2 - \mathcal{D}_1 \mathcal{D}_2$  are verified exactly in this example.

In conclusion, the explicit constructions and computations presented in this section confirm that the interpolation system  $\vec{\Theta}$ , the model system  $\Theta_\Delta$ , and the coupled multiplication system  $\Theta = \Theta_1 \cdot \Theta_2$  are equivalent not only in their transfer and impedance characteristics but also in their intrinsic invariants. The calculated values of the  $c$ -entropy and dissipation coefficient coincide across all realizations, providing concrete numerical evidence for the theoretical results of Sections 6 and 8. These findings demonstrate that the invariants  $\mathcal{S}$  and  $\mathcal{D}$  depend exclusively on the geometric placement of the interpolation nodes in  $\mathbb{C}_+$ , with maximal finite  $c$ -entropy achieved for purely imaginary nodes. Thus, the examples substantiate the intrinsic character of these quantities and establish a direct correspondence between the analytic structure of the interpolation data and the dynamical properties of the associated L-systems.

## 9. Concluding Remarks

In this paper, we followed a unified framework linking the Nevanlinna-Pick interpolation problem with the theory of L-systems that was developed in [3]. Explicit formulas were derived for the c-entropy and dissipation coefficient, together with precise conditions under which the c-entropy is finite, maximal, or infinite. These quantities were shown to be intrinsic invariants determined solely by the geometric placement of interpolation nodes in  $\mathbb{C}_+$ .

The interpolation model  $\Theta_\Delta$  constructed here provides an operator realization that reproduces the analytic data of the interpolation problem while preserving its internal dissipative structure. The accompanying examples confirm that the same transfer behavior and invariant measures of c-entropy and dissipation are shared by the Pick-form, canonical, and coupled realizations.

Special attention was given to symmetric interpolation configurations, for which the impedance function admits an explicit rational representation and a direct physical interpretation in terms of equivalent *LC*-networks. This correspondence illustrates how the geometric symmetry of interpolation data translates into balanced energy exchange within the associated L-system.

Overall, the results demonstrate that the c-entropy and dissipation coefficient provide effective quantitative bridges between analytic interpolation data and operator-theoretic dissipation models, revealing a concrete link between system geometry, entropy, and physical energy balance.

**Data sharing.** Data sharing is not applicable to this article as no datasets were generated or analyzed during the current study.

**Funding declaration.** No funding was received for conducting this study or to assist with the preparation of this manuscript.

## Appendix A. The Multiplication Theorem

**THEOREM 16** (cf. [9]). *Assume that  $\Theta$  is the L-system (operator) coupling of the form (26)-(33) referred to in Section 4.*

*Then*

$$(54) \quad W_\Theta(z) = W_{\Theta_1}(z) \cdot W_{\Theta_2}(z), \quad z \in \rho(T_1) \cap \rho(T_2).$$

**PROOF.** Suppose, for definiteness, that  $T_1$  and  $T_2$  are multiplication operators in  $\mathcal{H}$  of the form (20) given by

$$T_1 h = \lambda_0 h \quad \text{and} \quad T_2 h = \mu_0 h, \quad h \in \mathcal{H}.$$

Since

$$\begin{aligned} \mathbf{T} \begin{bmatrix} h_1 \\ h_2 \end{bmatrix} &= \begin{pmatrix} T_1 & 2iK_1K_2^* \\ 0 & T_2 \end{pmatrix} \begin{bmatrix} h_1 \\ h_2 \end{bmatrix} = \begin{bmatrix} T_1 h_1 + 2iK_1K_2^* h_2 \\ T_2 h_2 \end{bmatrix} \\ &= \begin{bmatrix} \lambda_0 h_1 + 2i\sqrt{(\operatorname{Im} \lambda_0) \cdot (\operatorname{Im} \mu_0)} h_2 \\ \mu_0 h_2 \end{bmatrix}, \quad \forall h_1, h_2 \in \mathcal{H}. \end{aligned}$$

using elementary calculations one finds

$$\begin{aligned} (\mathbf{T} - zI)^{-1} &= \begin{pmatrix} \lambda_0 - z & 2i\sqrt{\operatorname{Im} \lambda_0 \cdot \operatorname{Im} \mu_0} \\ 0 & \mu_0 - z \end{pmatrix}^{-1} \\ &= \frac{1}{(\lambda_0 - z)(\mu_0 - z)} \begin{pmatrix} \mu_0 - z & -2i\sqrt{\operatorname{Im} \lambda_0 \cdot \operatorname{Im} \mu_0} \\ 0 & \lambda_0 - z \end{pmatrix}. \end{aligned}$$

Taking into account that

$$2i\sqrt{\operatorname{Im} \lambda_0 \cdot \operatorname{Im} \mu_0} = \sqrt{(\lambda_0 - \bar{\lambda}_0)(\mu_0 - \bar{\mu}_0)},$$

and using representations

$$\mathbf{K}c = \begin{bmatrix} K_1 c \\ K_2 c \end{bmatrix} = \begin{bmatrix} (\sqrt{\operatorname{Im} \lambda_0} c) h_0 \\ (\sqrt{\operatorname{Im} \mu_0} c) h_0 \end{bmatrix}.$$

and

$$\mathbf{K}^* \begin{bmatrix} h_1 \\ h_2 \end{bmatrix} = K_1^* h_1 + K_2^* h_2 = (h_1, \sqrt{\operatorname{Im} \lambda_0} h_0) + (h_2, \sqrt{\operatorname{Im} \mu_0} h_0).$$

we find

$$\begin{aligned} 2i\mathbf{K}^*(\mathbf{T} - zI)^{-1}\mathbf{K} &= \frac{2i((\mu_0 - z)\operatorname{Im} \lambda_0 - 2i\operatorname{Im} \lambda_0 \operatorname{Im} \mu_0 + (\lambda_0 - z)\operatorname{Im} \mu_0)}{(\lambda_0 - z)(\mu_0 - z)} \\ &= \frac{(\lambda_0 - \bar{\lambda}_0)(\bar{\mu}_0 - z) + (\lambda_0 - z)(\mu_0 - \bar{\mu}_0)}{(\lambda_0 - z)(\mu_0 - z)}. \end{aligned}$$

Finally,

$$\begin{aligned} W_{\Theta}(z) &= 1 - 2i\mathbf{K}^*(\mathbf{T} - zI)^{-1}\mathbf{K} = 1 - \frac{(\lambda_0 - \bar{\lambda}_0)(\bar{\mu}_0 - z) + (\lambda_0 - z)(\mu_0 - \bar{\mu}_0)}{(\lambda_0 - z)(\mu_0 - z)} \\ &= \frac{(\lambda_0 - z)(\mu_0 - z) - (\lambda_0 - \bar{\lambda}_0)(\bar{\mu}_0 - z) - (\lambda_0 - z)(\mu_0 - \bar{\mu}_0)}{(\lambda_0 - z)(\mu_0 - z)} \\ &= \frac{(\bar{\lambda}_0 - z)(\bar{\mu}_0 - z)}{(\lambda_0 - z)(\mu_0 - z)} = \frac{\bar{\lambda}_0 - z}{\lambda_0 - z} \cdot \frac{\bar{\mu}_0 - z}{\mu_0 - z} = W_{\Theta_1}(z) \cdot W_{\Theta_2}(z), \end{aligned}$$

completing the proof. Here we have used eq. (23).  $\square$

## References

- [1] D. Alpay, E.R. Tsekanovskii, *Interpolation theory in sectorial Stieltjes classes and explicit system solutions*. Lin. Alg. Appl., **314**, 91–136 (2000)
- [2] D. Alpay, E.R. Tsekanovskii, *Subclasses of Herglotz-Nevanlinna matrix-valued functions and linear systems*. In: J. Du and S. Hu (ed) *Dynamical systems and differential equations*, An added volume to *Discrete and continuous dynamical systems*, 1–14 (2001)
- [3] Yu. Arlinskii, S. Belyi, E. Tsekanovskii, *Conservative Realizations of Herglotz-Nevanlinna functions*, Oper. Theory Adv. Appl., vol. **217**, Birkhäuser Verlag, 2011.
- [4] S. Belyi, K. A. Makarov, E. Tsekanovskii, *On c-Entropy optimality of Donoghue classes*, ArXiv <https://arxiv.org/abs/2412.19895>.
- [5] S. Belyi, K. A. Makarov, E. Tsekanovskii, *L-systems with Multiplication Operator and c-Entropy*, Complex Analysis and Operator Theory, Topical Collection in Honor of Professor Henk de Snoo's 80th Birthday, vol. 19, 173 (2025). ArXiv <https://arxiv.org/abs/2504.12974>
- [6] S. Belyi, K. A. Makarov, E. Tsekanovskii, *The L-system representation and c-Entropy*, Pure and Applied Functional Analysis, vol. **9** (4), (2024), pp. 935–961.
- [7] S. Belyi, K. A. Makarov, E. Tsekanovskii, *On the c-Entropy of L-systems with Schrödinger operator*, Complex Analysis and Operator Theory, **16** (107), (2022), 1–59.
- [8] S. Belyi, K. A. Makarov, E. Tsekanovskii, *A system coupling and Donoghue classes of Herglotz-Nevanlinna functions*, Complex Analysis and Operator Theory, **10** (4), (2016), 835–880.
- [9] M. Brodskii, *Triangular and Jordan representations of linear operators*. Translations of Mathematical Monographs, Vol. 32. American Mathematical Society, Providence, R.I., 1971.
- [10] A. V. Efimov, V. P. Potapov, *J-expanding matrix-valued functions, and their role in the analytic theory of electrical circuits*. (Russian) Uspehi Mat. Nauk, **28**, No.1, (169), (1973), 65–130.
- [11] M. S. Livšic, *Operators, oscillations, waves*. Moscow, Nauka, 1966.
- [12] K. A. Makarov, E. Tsekanovskii, *On the addition and multiplication theorems*. Oper. Theory Adv. Appl., vol. **244**, (2015), 315–339.

- [13] K. A. Makarov, E. Tsekanovskii, *The Mathematics of Open Quantum Systems, Dissipative and Non-Unitary Representations and Quantum Measurements*, World Scientific, 2022.

DEPARTMENT OF MATHEMATICS, TROY UNIVERSITY, TROY, AL 36082, USA,  
*Email address:* [sbelyi@troy.edu](mailto:sbelyi@troy.edu)

DEPARTMENT OF MATHEMATICS, UNIVERSITY OF MISSOURI, COLUMBIA, MO 63211, USA  
*Email address:* [makarovk@missouri.edu](mailto:makarovk@missouri.edu)

DEPARTMENT OF MATHEMATICS, NIAGARA UNIVERSITY, LEWISTON, NY 14109, USA  
*Email address:* [tsekanov@niagara.edu](mailto:tsekanov@niagara.edu)